

# FLEXIBLE **HEATING** TAPES & CORDS



**BriskHeat®**

## INTRODUCTION TO XTREMEFLEX® HEATING TAPES & CORDS

The flexible designs and high temperature capabilities of XtremeFLEX® Heating Tapes and Cords provide an ideal solution. Heating tapes and cords can be used on any surface requiring fast and efficient direct contact heating, up to temperatures of 1400°F (760°C).



### Features & Benefits

#### ▶ High Temperatures and Watt Densities

- Rapid thermal response
- Temperatures up to 1400°F (760°C)
- Watt densities up to 13 watts/in<sup>2</sup> (2.0 watts/cm<sup>2</sup>)

#### ▶ Extremely Flexible and Versatile

#### ▶ Plug-and-Play Options

#### ▶ Rugged and Durable

- Multi-stranded resistance wire
- Moisture and chemical resistance with silicone rubber sheath

#### ▶ Wide Range of Applications

- Viscosity and temperature control
- Freeze protection
- Integrally heated tools
- Gas tubing
- Valves
- Laboratory apparatus
- Plastic bending
- External heating of dies and tools
- Temporary heat
- Hopper throat heater



**Temperatures  
Up to  
1400°F (760°C)**



## XTREMEFLEX® HEATING TAPES & CORDS SELECTION GUIDE

### Silicone Rubber Heating Tapes

Type	Series	Page	Maximum Exposure Temperature	Maximum Power Density watts/in <sup>2</sup> (watts/cm <sup>2</sup> )	Minimum Bend Radius in (mm)	IP Rating	Built-in Control	Grounded	Suitable for Electrical Conductive Surfaces
Silicone Rubber Heating Tapes	BS0 BS0-G	62	450°F (232°C)	4.3 (0.7)	0.25 (6)	IP66		✓ Select models	✓
Long-Length Silicone Rubber Heating Tapes	RKF/RKH	64	450°F (232°C)	4.3 (0.7)	0.25 (6)	IP66			✓
Silicone Rubber Heating Tapes with Preset Thermostat	RKP	65	Varies	1.0 (0.16)	0.25 (6)	IP66	✓		✓
Silicone Rubber Heating Tapes with Adjustable Thermostat Control	HSTAT MSTAT	66	Varies	6.0 (0.9)	0.25 (6)	IP54	✓	✓ Select models	✓
Silicone Rubber Heating Tapes with Time Percentage Dial Control	BSAT	68	450°F (232°C)	6.0 (0.9)	0.25 (6)	IP54	✓		✓
Cut-To-Length Silicone Rubber Heating Tapes	CTL	69	450°F (232°C)	Varies with length	0.25 (6)	IP54			✓

### Cloth Heating Tapes\*

Type	Series	Page	Maximum Exposure Temperature	Maximum Power Density watts/in <sup>2</sup> (watts/cm <sup>2</sup> )	Minimum Bend Radius in (mm)	IP Rating	Grounded	Suitable for Electrical Conductive Surfaces
Standard Insulated Cloth Heating Tapes	B00/BW0	72	932°F (500°C)	13.1 (2.0)	0.13 (3)	IP50		
Heavy Insulated Cloth Heating Tapes	BIH/BWH	73	932°F (500°C)	13.1 (2.0)	0.25 (6)	IP50		✓
Grounded Heavy Insulated Cloth Heating Tapes	BIH-G	73	482°F (250°C)	9.6 (1.5)	0.25 (6)	IP50	✓	✓
Dual Element Heavy Insulated Cloth Heating Tapes	BWH-D	74	932°F (500°C)	13.1 (2.0)	0.25 (6)	IP50		✓
Plastic Bending Strip Heaters	RH	75	900°F (482°C)	8.6 (1.3)	0.13 (3)	IP50		

### Heating Cords\*

Type	Series	Page	Maximum Exposure Temperature	Maximum Power Density watts/ft (watts/m)	Minimum Bend Radius in (mm)	IP Rating	Grounded	Suitable for Electrical Conductive Surfaces
Heating Cords	HTC/HWC	76	932°F (500°C)	60 (197)	0.13 (3)	IP50		✓

\*Maximum temperatures for removable and reuseable applications may be lower.

## XTREMEFLEX® SILICONE RUBBER HEATING TAPES

### Features & Benefits

- ▶ Exceptional flexibility for a wide range of heating applications
- ▶ Moisture and chemical resistant — IP66 rated
- ▶ Rapid thermal response
- ▶ Wide range of sizes to choose from
- ▶ Grounded and non-grounded models
- ▶ Choice of power leads on same end or opposite ends



### Specifications

**Maximum Exposure Temperature:** 450°F (232°C)

**Outer Sheath:** Silicone rubber extruded

**Inner Construction:** Fiberglass knitted and braided construction

**Minimum Bend Radius:** 0.25 in (6 mm)

**Nominal Thickness:** 0.125 in (3 mm)

**Power density:** 4.3 watts/in<sup>2</sup> (0.7 watts/cm<sup>2</sup>)

**Voltage:** 120 or 240 VAC

**Power Leads:** 2 ft (0.6 m) long with

- 120 VAC Non-grounded: Separable 2-prong plug
  - 120 VAC Grounded: Bare wires
  - 240 VAC: Crimped ferrule leads or bare wire leads.
- See ordering information for details

**IP Rating:** IP66



**Temperatures  
Up to  
450° F (232° C)**



**Moisture  
& Chemical  
Resistant**




**Suitable for  
Electrically  
Conductive  
Surfaces**



## XTREMEFLEX® SILICONE RUBBER HEATING TAPES

### Ordering Information

#### BS0 Series – Non-Grounded

CE Models with crimped ferrule or bare wire leads **RoHS** 

Width in (mm)	Length ft (m)	Total Watts	Part No. 120 VAC	Part No. 240 VAC
0.5 (13)	2 (0.6)	52	<b>BS0051020L</b>	<b>BS0052020L**</b>
	4 (1.2)	104	<b>BS0051040L</b>	<b>BS0052040L**</b>
	6 (1.8)	156	<b>BS0051060L</b>	<b>BS0052060L**</b>
	8 (2.4)	209	<b>BS0051080L</b>	<b>BS0052080L**</b>
	10 (3.1)	261	<b>BS0051100L</b>	<b>BS0052100L**</b>
	12 (3.7)	313	<b>BS0051120L</b>	<b>BS0052120L**</b>
1.0 (25)	2 (0.6)	104	<b>BS0101020L</b>	<b>BS0102020L**</b>
	4 (1.2)	209	<b>BS0101040L</b>	<b>BS0102040L**</b>
	6 (1.8)	313	<b>BS0101060L</b>	<b>BS0102060L**</b>
	8 (2.4)	418	<b>BS0101080L</b>	<b>BS0102080L**</b>
	10 (3.1)	522	<b>BS0101100L</b>	<b>BS0102100L**</b>
	12 (3.7)	627	<b>BS0101120L</b>	<b>BS0102120L**</b>
	14 (4.3)	731	<b>BS0101140L</b>	<b>BS0102140L**</b>
	16 (4.9)	836	<b>BS0101160L</b>	<b>BS0102160L**</b>
	18 (5.5)	940	<b>BS0101180L</b>	<b>BS0102180L**</b>
	20 (6.1)	1045	—	<b>BS0102200L**</b>
20 (6.1)	1075	<b>BS0101200L</b>	—	
2.0 (51)	2 (0.6)	209	<b>BS0201020L</b>	<b>BS0202020L*</b>
	4 (1.2)	418	<b>BS0201040L</b>	<b>BS0202040L*</b>
	6 (1.8)	627	<b>BS0201060L</b>	<b>BS0202060L*</b>
	8 (2.4)	836	<b>BS0201080L</b>	<b>BS0202080L*</b>
	10 (3.1)	1045	<b>BS0201100L</b>	<b>BS0202100L*</b>
	12 (3.7)	1254	<b>BS0201120L</b>	<b>BS0202120L*</b>
	14 (4.3)	1463	<b>BS0201140L</b>	<b>BS0202140L*</b>
	16 (4.9)	1627	<b>BS0201160L</b>	<b>BS0202160L*</b>
	18 (5.5)	1881	<b>BS0201180L*</b>	<b>BS0202180L*</b>
	20 (6.1)	2090	<b>BS0201200L*</b>	<b>BS0202200L*</b>



BS0 Series – Non-Grounded




BS0-G Series – Grounded

\*Bare wire, plug not included

\*\*Crimped ferrule leads

**Ordering option:** For a single power lead on opposite ends, remove "L" from end of part number.

#### BS0-G Series – Grounded

CE Approval valid only when used in dry, indoor environments **RoHS** 

Width in (mm)	Length ft (m)	Total Watts	Part No. 120 VAC	Part No. 240 VAC
1.0 (25)	2 (0.6)	104	<b>BS0101020LG</b>	<b>BS0102020LG</b>
1.0 (25)	4 (1.2)	209	<b>BS0101040LG</b>	<b>BS0102040LG</b>
1.0 (25)	6 (1.8)	313	<b>BS0101060LG</b>	<b>BS0102060LG</b>
1.0 (25)	8 (2.4)	418	<b>BS0101080LG</b>	<b>BS0102080LG</b>
1.0 (25)	10 (3.1)	522	<b>BS0101100LG</b>	<b>BS0102100LG</b>



**IMPORTANT:** Temperature controller is required for these products. See options starting on page 145.

**Custom Sizes and Designs Available:** Contact BriskHeat® or your local distributor for more information.

## RKF/RKH XTREMEFLEX® LONG-LENGTH SILICONE RUBBER HEATING TAPES

### Features & Benefits

- ▶ Exceptional flexibility and durability
- ▶ Standard lengths up to 200 ft (61 m)
- ▶ Moisture and chemical resistant — IP66 rated
- ▶ Suitable for electrically conductive surfaces

### Specifications

**Maximum Exposure Temperature:** 450°F (232°C)

**Minimum Bend Radius:** 0.25 in (6 mm)

#### Power Density:

- RKF Series — 1.0 watts/in<sup>2</sup> (0.2 watts/cm<sup>2</sup>)
- RKH Series — 2.0 watts/in<sup>2</sup> (0.4 watts/cm<sup>2</sup>)
- Custom — up to 4.3 watts/in<sup>2</sup> (0.7 watts/cm<sup>2</sup>)

**Voltage:** 120 or 240 VAC

**Power Cord:** Standard 5 ft (1.5 m) power cord with

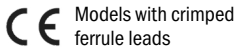
- 120 VAC: 2-prong plug (NEMA 1-15P)
- 240 VAC: Crimped ferrule leads

**IP Rating:** IP66

**NEW!**



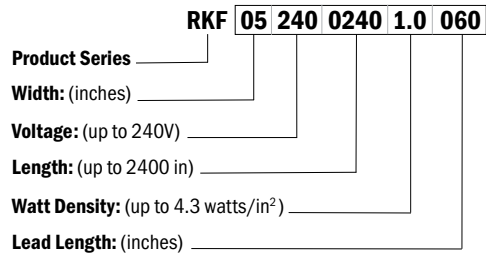
**Moisture & Chemical Resistant**



### Ordering Information

Part No. 120 VAC	Part No. 240 VAC	Product Series & Watt Density	Width in (mm)	Length ft (m)	Watts
RKF051200120	RKF052400120	RKF series 1.0 watts/in <sup>2</sup> (0.2 watts/cm <sup>2</sup> )	0.5 (13)	10 (3.0)	60
RKF051200240	RKF052400240			20 (6.1)	120
RKF051200480	RKF052400480			40 (12.2)	240
RKF051200720	RKF052400720			60 (18.3)	360
RKF051200960	RKF052400960			80 (24.4)	480
RKF051201200	RKF052401200			100 (30.5)	600
RKF051201800	RKF052401800			150 (45.7)	900
RKF051202400	RKF052402400			200 (70.0)	1200
RKH051200120	RKH052400120	RKH series 2.0 watts/in <sup>2</sup> (0.4 watts/cm <sup>2</sup> )	0.5 (13)	10 (3.0)	120
RKH051200240	RKH052400240			20 (6.1)	240
RKH051200480	RKH052400480			40 (12.2)	480
RKH051200720	RKH052400720			60 (18.3)	720
RKH051200960	RKH052400960			80 (24.4)	960
RKH051201200	RKH052401200			100 (30.5)	1200
N/A	RKH052401800			150 (45.7)	1800
N/A	RKH052402400			200 (70.0)	2400

### Part Number Matrix for Other Configurations



### Accessories

Adhesive Tape - Used for installation.



Part No.	Description
PSAT36A	<b>Standard Fiberglass Tape</b> Suitable for general purpose applications Size: 1/2 in x 36 yd (12 mm x 33 m) Silicone Adhesive Temp Limit: 392°F (200°C)
AAT260	<b>Extra-Strength Aluminum Tape</b> Enhanced Durability and Adhesion for More Rigorous Applications Size: 2 in x 180 ft (51 mm x 55 m) Acrylic Adhesive Temp Limit: 300°F (149°C)
AAT2180	<b>High Temperature Aluminum Tape</b> Designed for applications above 392°F (200°C) Size: 2 in x 180 ft (51 mm x 55 m) Silicone Adhesive w/ Liner Temp Limit: 550°F (288°C)

Custom Sizes and Designs Available: Contact BriskHeat® or your local distributor for more information.

## RKP XTREMEFLEX® SILICONE RUBBER HEATING TAPES WITH PRESET THERMOSTAT

**NEW!**

### Features & Benefits

- ▶ Extremely flexible heating tape with preset thermostat: 70°F (21°C) or 122°F (50°C)
- ▶ Ideal for freeze protection and process control heating applications
- ▶ Moisture and chemical resistant — IP66 rated
- ▶ Lengths up to 200 ft (61 m)



### Specifications

**Built-in Controlling Thermostat:** 70°F or 122°F (21°C or 50°C)

**Maximum Exposure Temperature:** 450°F (232°C)

**Outer Sheath:** Silicone rubber extruded

**Inner Construction:** Fiberglass knitted and braided construction

**Minimum Bend Radius:** 0.25 in (6 mm)

**Nominal Thickness:** 0.125 in (3 mm)

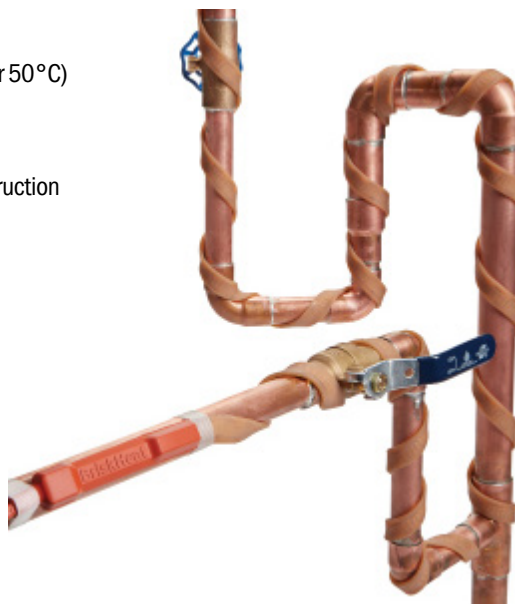
**Power Density:** 1.0 watts/in<sup>2</sup> (0.2 watts/cm<sup>2</sup>)

**Power Cord:** 5 ft (1.5 m) long with

- 120 VAC: standard 2-prong plug (NEMA 1-15)

- 240 VAC: crimped ferrule leads

**IP Rating:** IP66



**Plug & Play**



**Moisture & Chemical Resistant**

CE Models with crimped ferrule leads



### Ordering Information

Thermostat Setting 70°F (21°C)		Thermostat Setting 122°F (50°C)		Width in (mm)	Length ft (m)	Watts
Part No. 120 VAC	Part No. 240 VAC	Part No. 120 VAC	Part No. 240 VAC			
RKP1A0072	RKP2A0072	RKP1B0072	RKP2B0072	0.5 (12.7)	6 (1.8)	50
RKP1A0096	RKP2A0096	RKP1B0096	RKP2B0096		8 (2.4)	55
RKP1A0120	RKP2A0120	RKP1B0120	RKP2B0120		10 (3.1)	60
RKP1A0240	RKP2A0240	RKP1B0240	RKP2B0240	0.5 (13)	20 (6.1)	120
RKP1A0480	RKP2A0480	RKP1B0480	RKP2B0480		40 (12.2)	240
RKP1A0600	RKP2A0600	RKP1B0600	RKP2B0600		50 (15.2)	300
RKP1A0720	RKP2A0720	RKP1B0720	RKP2B0720	60 (18.3)	360	450
RKP1A0900	RKP2A0900	RKP1B0900	RKP2B0900	75 (22.9)		
RKP1A0960	RKP2A0960	RKP1B0960	RKP2B0960	80 (24.4)		
RKP1A1200	RKP2A1200	RKP1B1200	RKP2B1200	100 (30.5)	600	750
RKP1A1500	RKP2A1500	RKP1B1500	RKP2B1500	125 (38.1)		
N/A	RKP2A1800	N/A	RKP2B1800	150 (45.7)	900	
N/A	RKP2A2400	N/A	RKP2B2400	200 (61.0)	1200	

### Accessories



Part No.	Description
<b>PSAT36A</b>	<b>Standard Fiberglass Tape</b> Suitable for general purpose applications Size: 1/2 in x 36 yd (12 mm x 33 m) Silicone Adhesive Temp Limit: 392°F (200°C)
<b>AAT2180</b>	<b>High Temperature Aluminum Tape</b> Designed for applications above 392°F (200°C) Size: 2 in x 180 ft (51 mm x 55 m) Silicone Adhesive w/ Liner Temp Limit: 550°F (288°C)

Custom Sizes and Designs Available: Contact BriskHeat® or your local distributor for more information.

## **XTREMEFLEX® SILICONE RUBBER HEATING TAPES WITH ADJUSTABLE THERMOSTAT CONTROL**

### Features & Benefits

- ▶ Extremely flexible — Heats a wide range of objects quickly
- ▶ Adjustable thermostat control — Temperatures up to 160°F (71°C) and 425°F (218°C)
- ▶ Moisture and chemical resistant — IP54 rated
- ▶ Grounded and non-grounded models
- ▶ Can wrap around and heat a wide range of objects — valves, pipes, bearings, pumps, gas tubing, filter housings, actuators, and more
- ▶ Solves a wide range of applications — examples include viscosity control, freeze protection, emergency de-icing, temperature maintenance, supplemental heat, and melting of solids
- ▶ Easy-to-use — simple plug-and-play design
- ▶ Rugged — provides long service life and can be used in a wide variety of environments



### Specifications

**Maximum Exposure Temperature:** 450°F (232°C)

**Minimum Bend Radius:** 0.250 in (6 mm)

**Nominal Thickness:** 0.125 in (3 mm)

**Power Density:** 6.0 watts/in<sup>2</sup> (0.9 watts/cm<sup>2</sup>)†

**Power Cord:** 6 ft (1.8 m) long with

- 120 VAC Non-grounded: 2-prong plug (NEMA 1-15P)
- 120 VAC Grounded: 3-prong plug (NEMA 5-15P)
- 240 VAC: Crimped ferrule leads

**IP Rating:** IP54

**CE** Models with crimped ferrule leads



If precise temperature control is required for your application, please contact BriskHeat or your local distributor for application assistance and product solutions.

† Reduced watt density as low as 2.4 watts/in<sup>2</sup> (0.4 watts/cm<sup>2</sup>) for longer length heating tapes.



**Moisture & Chemical Resistant**



**Suitable for Electrically Conductive Surfaces**



**Plug & Play**



Easy-to-use adjustable thermostat

## XTREMEFLEX® SILICONE RUBBER HEATING TAPES WITH ADJUSTABLE THERMOSTAT CONTROL

**NEW!**

### Ordering Information

#### HSTAT Series – Non-Grounded

Temperature Range: Up to 425°F (218°C)

- Ideal for higher temperature applications

Part No. 120 VAC	Part No. 240 VAC	Width in (mm)	Length ft (m)	Total Watts
HSTAT051002	HSTAT052002		2 (0.6)	72
HSTAT051004	HSTAT052004		4 (1.2)	144
HSTAT051006	HSTAT052006	0.5 (13)	6 (1.8)	216
HSTAT051008	HSTAT052008		8 (2.4)	288
HSTAT051010	HSTAT052010		10 (3.1)	360
HSTAT101002	HSTAT102002		2 (0.6)	144
HSTAT101004	HSTAT102004		4 (1.2)	288
HSTAT101006	HSTAT102006	1.0 (25)	6 (1.8)	432
HSTAT101008	HSTAT102008		8 (2.4)	576
HSTAT101010	HSTAT102010		10 (3.1)	720
HSTAT201002	HSTAT202002		2 (0.6)	288
HSTAT201004	HSTAT202004		4 (1.2)	576
HSTAT201006	HSTAT202006	2.0 (51)	6 (1.8)	864
HSTAT201008	HSTAT202008		8 (2.4)	1152
HSTAT201010	HSTAT202010		10 (3.1)	1440
HSTAT301002	HSTAT302002		2 (0.6)	432
HSTAT301004	HSTAT302004		4 (1.2)	864
HSTAT301006	HSTAT302006	3.0 (76)	6 (1.8)	1296
HSTAT301008	HSTAT302008		8 (2.4)	1440
HSTAT301010	HSTAT302010		10 (3.1)	1800

#### MSTAT Series

Temperature Range: Up to 160°F (71°C)

- Enhanced precision for lower-temperature applications

Part No. 120 VAC	Part No. 240 VAC	Width in (mm)	Length ft (m)	Total Watts
MSTAT101002	MSTAT102002		2 (0.6)	144
MSTAT101004	MSTAT102004		4 (1.2)	288
MSTAT101006	MSTAT102006		6 (1.8)	432
MSTAT101008	MSTAT102008		8 (2.4)	576
MSTAT101010	MSTAT102010	1.0 (25)	10 (3.0)	720
MSTAT101015	MSTAT102015		15 (4.5)	1080
MSTAT101020	MSTAT102020		20 (6.1)	1200
MSTAT101030*	MSTAT102030*		30 (9.1)	1440
MSTAT101040*	MSTAT102040*		40 (12.2)	1440
MSTAT101050*	MSTAT102050*		50 (15.2)	1440

\*Reduced watt density



#### HSTAT-G Series – Grounded

Temperature Range: Up to 425°F (218°C)

**NEW!**

Part No. 120 VAC	Part No. 240 VAC	Width in (mm)	Length ft (m)	Total Watts
HSTAT101002G	HSTAT102002G		2 (0.6)	144
HSTAT101004G	HSTAT102004G		4 (1.2)	288
HSTAT101006G	HSTAT102006G	1.0 (25)	6 (1.8)	432
HSTAT101008G	HSTAT102008G		8 (2.4)	576
HSTAT101010G	HSTAT102010G		10 (3.1)	720

Custom Sizes and Designs Available: Contact BriskHeat® or your local distributor for more information.

## XTREMEFLEX® SILICONE RUBBER HEATING TAPES WITH TIME PERCENTAGE CONTROL

### Features & Benefits

- ▶ Extremely flexible — Heats a wide range of objects quickly
- ▶ Time percentage control — Easily adjusts time heater is on and off: 5 to 100%
- ▶ Moisture and chemical resistant — IP54 rated
- ▶ Ideal for a wide range of temporary heating applications and surfaces: laboratory, valves, facilities maintenance, and more

### Specifications

**Maximum Exposure Temperature:** 450°F (232°C)

**Minimum Bend Radius:** 0.25 in (6 mm)

**Nominal Thickness:** 0.125 in (3 mm)

**Power Density:** 6.0 watts/in<sup>2</sup> (0.9 watts/cm<sup>2</sup>)

**Power Cord:** 6 ft (1.8 m) long with

- 120 VAC Non-grounded: 2-prong plug (NEMA 1-15P)
- 240 VAC: Bare wire leads

**IP Rating:** IP54

CE Models with bare wire leads



Plug & Play



Moisture & Chemical Resistant



Suitable for Electrically Conductive Surfaces

### What is a Time Percentage Control?

The time percentage controller varies the proportion (length) of time the heater is in the “on” or “off” heating mode. The heating application will determine the actual percentage set-point required. The controller does not use a temperature sensor and therefore satisfactory operation requires occasional supervision under changing load conditions.



### Adhesive Tape

Provides intimate contact with surface to be heated. A heating tape essential!

### Ordering Information

Part No. 120 VAC	Part No. 240 VAC	Width in (mm)	Length ft (m)	Total Watts
BSAT051002	BSAT052002		2 (0.6)	72
BSAT051004	BSAT052004		4 (1.2)	144
BSAT051006	BSAT052006	0.5 (13)	6 (1.8)	216
BSAT051008	BSAT052008		8 (2.4)	288
BSAT051010	BSAT052010		10 (3.1)	360
BSAT101002	BSAT102002		2 (0.6)	144
BSAT101004	BSAT102004		4 (1.2)	288
BSAT101006	BSAT102006	1.0 (25)	6 (1.8)	432
BSAT101008	BSAT102008		8 (2.4)	576
BSAT101010	BSAT102010		10 (3.1)	720
BSAT201002	BSAT202002		2 (0.6)	288
BSAT201004	BSAT202004		4 (1.2)	576
BSAT201006	BSAT202006	2.0 (51)	6 (1.8)	864
BSAT201008	BSAT202008		8 (2.4)	1152
BSAT201010	BSAT202010		10 (3.1)	1440
BSAT301002	BSAT302002		2 (0.6)	432
BSAT301004	BSAT302004		4 (1.2)	864
BSAT301006	BSAT302006	3.0 (76)	6 (1.8)	1296
BSAT301008	BSAT302008		8 (2.4)	1440
BSAT301010	BSAT302010		10 (3.1)	1800



Part No.	Description
<b>PSAT36A</b>	<b>Standard Fiberglass Tape</b> Suitable for general purpose applications Size: 1/2 in x 36 yd (12 mm x 33 m) Silicone Adhesive Temp Limit: 400°F (204°C)
<b>AAT260</b>	<b>Extra-Strength Aluminum Tape</b> Enhanced Durability and Adhesion for More Rigorous Applications Size: 2 in x 180 ft (51 mm x 55 m) Acrylic Adhesive Temp Limit: 350°F (176°C)
<b>AAT2180</b>	<b>High Temperature Aluminum Tape</b> Designed for applications above 392°F (200°C) Size: 2 in x 180 ft (51 mm x 55 m) Silicone Adhesive w/ Liner Temp Limit: 550°F (288°C)

Custom Sizes and Designs Available: Contact BriskHeat® or your local distributor for more information.

## CTL XTREMEFLEX® CUT-TO-LENGTH SILICONE RUBBER HEATING TAPES

### Features & Benefits

- ▶ Exceptional flexibility — well suited for pipeline tracing
- ▶ Can be cut-to-length at job site
- ▶ Moisture and chemical resistant — IP54 rated
- ▶ Rapid thermal response

### Specifications

**Maximum Exposure Temperature:** 450°F (232°C)

**Outer Sheath:** Silicone rubber extruded

**Inner Construction:** Fiberglass knitted and braided construction

**Minimum Bend Radius:** 0.25 in (6 mm)

**Nominal Thickness:** 0.125 in (3 mm)

**IP Rating:** IP54



### Ordering Information

#### Cut-To-Length Heating Tape

Part No.	Ohms Per ft (m)	Volts	Min ft (m)	Max ft (m)	Width in (mm)
<b>Call</b>	0.10 (0.328)	120 VAC 240 VAC	57 (17) 114 (35)	220 (67) 440 (134)	1 (25)
<b>Call</b>	0.90 (2.953)	120 VAC 240 VAC	19 (6) 38 (12)	74 (23) 146 (45)	1 (25)
<b>Call</b>	10.00 (32.808)	120 VAC 240 VAC	6 (2) 12 (4)	22 (7) 44 (13)	1 (25)

Contact your Representative for ordering specifications.

#### Cut-To-Length Termination Kits

Part No.	Type	Description	Usage
<b>CTLLK</b>	Lead Kit	Crimp-on wire terminals Heavy-Duty joint cover 8 ft (2.4 m) 6 AWG high temperature leads covered with insulating sleeve	Connects main power supply to heating tape.
<b>CTLEK</b>	End Kit	Crimp-on wire terminals Heavy-Duty joint cover	Terminates the end of the heating tape.
<b>CTLTK</b>	Tee Kit	Crimp-on wire terminals Heavy-Duty joint covers 1 ft (0.3 m) 16 AWG high-temperature leads covered with insulating sleeve 1 end kit	Joins three segments of heating tape.
<b>CTLJK</b>	Jumper Kit	Heavy-Duty joint cover 2 ft (0.6 m) 16 AWG high-temperature leads covered with insulating sleeve	Makes a splice/jumper combining two segments of heating tape.



### What is cut-to-length heating tape?

Cut-to-length heating tape is a series heating element design; wattages and amperages vary with the tape length. Contact BriskHeat to determine the actual wattage output for your given application.

**IMPORTANT: Temperature controller is required for this product. See options starting on page 145.**

NOTE: Cut-to-length termination kits require RTV adhesive and adhesive tape.

### Adhesive Tape

Provides intimate contact with surface to be heated. A heating tape essential!



Part No.	Description
<b>PSAT36A</b>	<b>Standard Fiberglass Tape</b> Suitable for general purpose applications Size: 1/2 in x 36 yd (12 mm x 33 m) Silicone Adhesive Temp Limit: 400°F (204°C)
<b>AAT2180</b>	<b>High Temperature Aluminum Tape</b> Designed for applications above 392°F (200°C) Size: 2 in x 180 ft (51 mm x 55 m) Silicone Adhesive w/Liner Temp Limit: 550°F (288°C)

### RTV Sealant

Silicone sealant used to seal connection kit.

Part No.	Description
<b>RTV3.0</b>	3 oz. (89 ml)



## **XTREMEFLEX® INSULATED CLOTH HEATING TAPES**

### **Features & Benefits**

- ▶ Exceptional flexibility for a wide range of applications
- ▶ Rapid thermal response
- ▶ Wide range of sizes and watt densities to choose from
- ▶ Grounded and non-grounded models
- ▶ Includes high-temperature tie downs for easy installation
- ▶ Versatile — Can wrap around and heat a wide range of objects — laboratory apparatus, glassware, pipes, weldments, etc.
- ▶ Solves a wide range of applications — examples include viscosity control, laboratory, temperature maintenance, and melting of solids
- ▶ Easy-to-use
- ▶ Suitable for high temperatures



High-Temperature, Extra-Heavy  
Insulated & Grounded  
Flexible Heating Tape page 74

## XTREMEFLEX® HEAVY INSULATED CLOTH HEATING TAPES

### Specifications and Selection Guide

Series	Type	Maximum Exposure Temperature	Construction	Watt Density watts/in <sup>2</sup> (watts/cm <sup>2</sup> )	IP Rating	Lead Length ft (m)	Plug Type	Page
<b>B00</b>	Non-grounded	Single Install: Up to 932°F (500°C) Removable/Reusable: Up to 572°F (300°C)	Fiberglass	8.6 (1.3)	IP50	2 (0.6)	120 VAC: Separable 2-prong plug 240 VAC: Bare wire or crimped ferrule leads	72
<b>BW0</b>	Non-grounded	Single Install: Up to 932°F (500°C) Removable/Reusable: Up to 572°F (300°C)	Samox	13.1 (2.0)	IP50	2 (0.6)	120 VAC: Separable 2-prong plug 240 VAC: Bare wire or crimped ferrule leads	72
<b>BIH</b>	Non-grounded	Single Install: Up to 932°F (500°C) Removable/Reusable: Up to 572°F (300°C)	Fiberglass	Standard: 8.6 (1.3) Wide †: 5.1 (0.8)	IP50	2 (0.6)	120 VAC: Separable 2-prong plug 240 VAC: Bare wire or crimped ferrule leads	73
<b>BWH</b>	Non-grounded, high-watt density	Single Install: Up to 932°F (500°C) Removable/Reusable: Up to 572°F (300°C)	Samox	Standard: 13.1 (2.0) Wide †: 5.1 (0.8)	IP50	2 (0.6)	120 VAC: Separable 2-prong plug 240 VAC: Bare wire or crimped ferrule leads	73
<b>BIH-G</b>	Grounded	Up to 482°F (250°C)	Fiberglass	9.6 (1.5)	IP50	2 (0.6)	Bare wire leads	73
<b>BWH-D</b>	Dual element – increased flexibility	Single Install: Up to 932°F (500°C) Removable/Reusable: Up to 572°F (300°C)	Samox	13.1 (2.0)	IP50	2 (0.6)	120 VAC: 2-prong plug (NEMA1-15P) 240 VAC: Bare wire leads	74

† 1.75 in (44 mm) wide tape or greater



All Heavy Insulated Cloth Heating Tapes

**Custom Sizes and Designs Available: Contact BriskHeat® or your local distributor for more information.**

### EASY WAYS TO ORDER

1. Contact your local distributor. Check BriskHeat.com to locate a local distributor.
2. Call BriskHeat® at 800-848-7673 or 614-294-3376. We have a staff of application specialists to solve your unique needs.
3. Order online at BriskHeat.com - 24/7.

### PAYMENT TERMS

#### Credit Card Options



#### Net 30 Option

Net 30 Terms are available to qualified companies. Please contact your Account Manager for additional details.

## B00/BW0 XTREMEFLEX® STANDARD INSULATED CLOTH HEATING TAPES

### Features & Benefits

- ▶ Excellent flexibility
- ▶ Rapid thermal response
- ▶ Suitable for non-conductive electrical surfaces only (i.e. glass)
- ▶ Choice of power leads on same end or opposite ends
- ▶ Includes high-temperature tie-downs for easy installation

### Specifications

#### Maximum Exposure Temperature:

- Single Install: Up to 932°F (500°C)
- Removable/Reusable: Up to 572°F (300°C)

#### Construction:

- B00 series: fiberglass knitted and braided
- BW0 series: Samox knitted and braided

#### Power Density:

- B00 series: 8.6 watts/in<sup>2</sup> (1.3 watts/cm<sup>2</sup>)
- BW0 series: 13.1 watts/in<sup>2</sup> (2.0 watts/cm<sup>2</sup>)

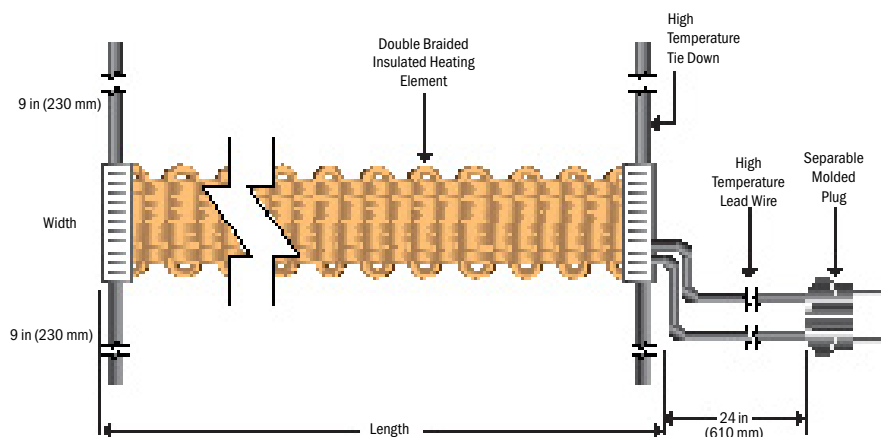
#### Voltage: 120 or 240 VAC

#### Minimum Bend Radius: 0.13 in (3 mm)

#### Power Leads: 2 ft (0.6 m) long with

- 120 VAC: Separable 2-prong plug
- 240 VAC: Bare wire leads

#### IP Rating: IP5X



### Ordering Information

#### B00 Series – 8.6 watts/in<sup>2</sup> (1.3 watts/cm<sup>2</sup>) watt density

Power Leads on Same End

Part No. 120 VAC	Part No. 240 VAC	Width in (mm)	Length ft (m)	Total Watts
B00051020L	B00052020L	0.5 (13)	2 (0.6)	105
B00051040L	B00052040L		4 (1.2)	210
B00051060L	B00052060L		6 (1.8)	310
B00051080L	B00052080L		8 (2.4)	420
B00051100L	B00052100L		10 (3.1)	520
B00101020L	B00102020L	1.0 (25)	2 (0.6)	210
B00101040L	B00102040L		4 (1.2)	420
B00101060L	B00102060L		6 (1.8)	620
B00101080L	B00102080L		8 (2.4)	830
N/A	B00102100L		10 (3.1)	1045

#### BW0 Series – 13.1 watts/in<sup>2</sup> (2.0 watts/cm<sup>2</sup>) watt density

Power Leads on Same End

Part No. 120 VAC	Part No. 240 VAC	Width in (mm)	Length ft (m)	Total Watts
BW0051020L	BW0052020L	0.5 (13)	2 (0.6)	160
BW0051040L	BW0052040L		4 (1.2)	310
BW0051060L	BW0052060L		6 (1.8)	470
BW0051080L	BW0052080L		8 (2.4)	620
N/A	BW0052100L		10 (3.1)	780
N/A	BW0052120L		12 (3.7)	940
BW0101020L	BW0102020L	1.0 (25)	2 (0.6)	310
BW0101040L	BW0102040L		4 (1.2)	620
N/A	BW0102060L		6 (1.8)	940
N/A	BW0102080L		8 (2.4)	1250

Ordering option: For a single power lead on opposite ends, remove "L" from end of part number

**IMPORTANT: Temperature controller is required for this product. See options starting on page 145.**

## BIH/BWH/BIH-G/BWH-D SERIES XTREMEFLEX® HEAVY INSULATED CLOTH HEATING TAPES



Suitable for Electrically Conductive Surfaces

### Ordering Information

#### BIH Series: Non-Grounded 8.6 watts/in<sup>2</sup> (1.3 watts/cm<sup>2</sup>)

Single Install: Up to 932°F (500°C)      Removable/Reusable: Up to 572°F (300°C)      Power Leads on Same End

Part No. 120 VAC	Part No. 240 VAC	Width in (mm)	Length ft (m)	Total Watts
BIH051020L	BIH052020L**	0.50 (13)	2 (0.6)	105
BIH051040L	BIH052040L**		4 (1.2)	210
BIH051060L	BIH052060L**		6 (1.8)	310
BIH051080L	BIH052080L**		8 (2.4)	420
BIH051100L	BIH052100L**		10 (3.1)	520
BIH051120L	BIH052120L**		12 (3.7)	620
BIH101010L	N/A	1.00 (25)	1 (0.3)	105
BIH101020L	BIH102020L**		2 (0.6)	210
BIH101040L	BIH102040L**		4 (1.2)	420
BIH101060L	BIH102060L**		6 (1.8)	620
BIH101080L	BIH102080L**		8 (2.4)	830
BIH101100L	BIH102100L**		10 (3.1)	1040
BIH171020L	BIH172020L*	1.75 (44)	2 (0.6)	209
BIH171040L	BIH172040L*		4 (1.2)	418
BIH171060L	BIH172060L*		6 (1.8)	627
BIH171080L	BIH172080L*		8 (2.4)	836
BIH171100L	BIH172100L*		10 (3.1)	1045
BIH251020L	BIH252020L*		2.50 (64)	2 (0.6)
BIH251040L	BIH252040L*	4 (1.2)		627
BIH251060L	BIH252060L*	6 (1.8)		940
BIH251080L	BIH252080L*	8 (2.4)		1254
BIH251100L	BIH252100L*	10 (3.1)		1567
BIH321020L	BIH322020L*	3.25 (83)		2 (0.6)
BIH321040L	BIH322040L*		4 (1.2)	836
BIH321060L	BIH322060L*		6 (1.8)	1254
BIH321080L*	BIH322080L*		8 (2.4)	1672
BIH321100L*	BIH322100L*		10 (3.1)	2090

\*Bare wire, plug not included

\*\*Ferrule crimp wire termination

**Ordering option:** For a single power lead on opposite ends, remove "L" from end of part number. (BIH and BWH series)

#### BIH-G Series: Grounded

Up to 482°F (250°C)

Part No. 120 VAC	Part No. 240 VAC	Width in (mm)	Length ft (m)	Total Watts
BIH101020LG	BIH102020LG	1.0 (25)	2 (0.6)	230
BIH101040LG	BIH102040LG	1.0 (25)	4 (1.2)	230
BIH101060LG	BIH102060LG	1.0 (25)	6 (1.8)	690
BIH101080LG	BIH102080LG	1.0 (25)	8 (2.4)	920
BIH101100LG	BIH102100LG	1.0 (25)	10 (3.1)	1150



BIH & BWH Series

#### BWH Series: Non-Grounded 13.1 watts/in<sup>2</sup> (2.0 watts/cm<sup>2</sup>)

Single Install: Up to 932°F (500°C)      Removable/Reusable: Up to 572°F (300°C)      Power Leads on Same End

Part No. 120 VAC	Part No. 240 VAC	Width in (mm)	Length ft (m)	Total Watts
BWH051020L	BWH052020L**	0.50 (13)	2 (0.6)	156
BWH051040L	BWH052040L**		4 (1.2)	313
BWH051060L	BWH052060L**		6 (1.8)	470
BWH051080L	BWH052080L**		8 (2.4)	627
N/A	BWH052100L**		10 (3.1)	783
N/A	BWH052120L**		12 (3.7)	940
BWH101020L	BWH102020L**	1.00 (25)	2 (0.6)	313
BWH101040L	BWH102040L**		4 (1.2)	627
BWH101060L	BWH102060L**		6 (1.8)	940
BWH101080L	BWH102080L**		8 (2.4)	1254
N/A	BWH102100L**		10 (3.1)	1570
BWH171020L	BWH172020L*		1.75 (44)	2 (0.6)
BWH171040L	BWH172040L*	4 (1.2)		627
BWH171060L	BWH172060L*	6 (1.8)		940
BWH171080L	BWH172080L*	8 (2.4)		1254
BWH171100L	BWH172100L*	10 (3.1)		1570
BWH251020L	BWH252020L*	2.50 (64)		2 (0.6)
BWH251040L	BWH252040L*		4 (1.2)	940
BWH251060L	BWH252060L*		6 (1.8)	1411
BWH251080L*	BWH252080L*		8 (2.4)	1881
N/A	BWH252100L*		10 (3.1)	2351
BWH321020L	BWH322020L*		3.25 (83)	2 (0.6)
BWH321040L	BWH322040L*	4 (1.2)		1254
BWH321060L*	BWH322060L*	6 (1.8)		1881
BWH321080L*	BWH322080L*	8 (2.4)		2508
BWH321100L*	BWH322100L*	10 (3.1)		3135



BIH-G Series – Grounded

**IMPORTANT:** Temperature controller is required for these products. See options starting on page 145.

**Custom Sizes and Designs Available:** Contact BriskHeat® or your local distributor for more information.

## BIH/BWH/BIH-G/BWH-D SERIES XTREMEFLEX® HEAVY INSULATED CLOTH HEATING TAPES

### Ordering Information

#### BWH-D Series Dual Element

- Dual element for increased flexibility
- Single install:  
Up to 932°F (500°C)
- Removable/Reusable:  
Up to 572°F (300°C)



**Suitable for Electrically Conductive Surfaces**





**BWH-D Series – Dual Element**

Part No. 120 VAC	Part No. 240 VAC	Width in (mm)	Length ft (m)	Total Watts
BWH051020LD	BWH052020LD*		2 (0.6)	156
BWH051040LD	BWH052040LD*		4 (1.2)	312
BWH051060LD	BWH052060LD*	0.5 (13)	6 (1.8)	468
BWH051080LD	BWH052080LD*		8 (2.4)	624
BWH051100LD	BWH052100LD*		10 (3.1)	780
BWH101020LD	BWH102020LD*		2 (0.6)	312
BWH101040LD	BWH102040LD*		4 (1.2)	624
BWH101060LD	BWH102060LD*	1.0 (25)	6 (1.8)	936
BWH101080LD	BWH102080LD*		8 (2.4)	1248

\*Bare wire, plug not included

**IMPORTANT: Temperature controller is required for these products. See options starting on page 145.**

### Accessories

Part No.	Description
 <b>PSAT36A</b>	<b>Standard Fiberglass Tape</b> Suitable for general purpose applications Size: 1/2 in x 36 yd (12 mm x 33 m) Silicone Adhesive Temp Limit: 400°F (204°C)
 <b>AAT2180</b>	<b>High Temperature Aluminum Tape</b> Designed for applications above 392°F (200°C) Size: 2 in x 180 ft (51 mm x 55 m) Silicone Adhesive w/ Liner Temp Limit: 550°F (288°C)

**Bundles that include a temperature controller and heater are available for a wide variety of heating tapes and cords. See options starting on page 145.**



**Custom Sizes and Designs Available: Contact BriskHeat® or your local distributor for more information.**

## RH PLASTIC BENDING STRIP HEATERS

### Features & Benefits

- ▶ Heating element used for plastic acrylic bending applications
- ▶ Provides radiant line of heat for controlled bending
- ▶ Multi-stranded resistance wire heating element provides exceptional flexibility and durability
- ▶ Quickly softens acrylic and plastic sheets for easy bending
- ▶ Ideal for plastic photo frames, sneeze guards, arts and crafts, custom workshop fabricating, and more
- ▶ Radiant heat — heater never comes in contact with plastic
- ▶ Easy-to-use — designed for production use and for hobbyists

### Specifications

**Maximum Application Temperature:** Up to 900°F (482°C)

**Construction:** Fiberglass knitted and braided

**Power Density:** 8.6 watts/in<sup>2</sup> (1.3 watts/cm<sup>2</sup>)

**Voltage:** 120 VAC

**Minimum Bend Radius:** 0.13 in (3 mm)

**Power Leads:** 2 ft (0.6 m) long with separable 2-prong plug

**IP Rating:** IP5X

NOTE: Suitable for non-conductive surfaces only

✓RoHS



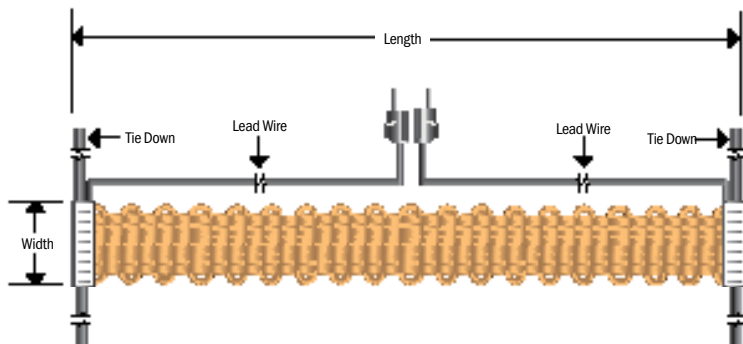
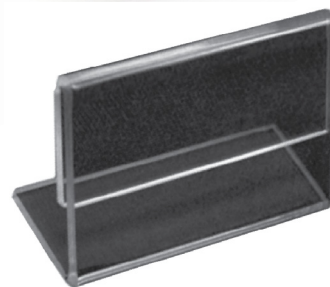
### Ordering Information

#### RH Series – Plastic Bending Strip Heaters

Includes heating element and instructions for building a complete plastic bending set-up. Other materials are required.

Part No. 120 VAC	Width in (mm)	Length ft (m)	Total Watts
RH24		2 (0.6)	105
RH36	0.5 (13)	3 (0.9)	157
RH48		4 (1.2)	209

**Custom Sizes and Designs Available: Contact BriskHeat® or your local distributor for more information.**



### Recommended Controllers

Temperature controller or close supervision is required for safe operation.



**TPO PortableTime Percentage Controller**  
– See page 179 for more details.

**SDC Digital Benchtop On/Off Controller**  
– See page 161 for more details.



**NEW LYNX® PID Temperature Control Sets** –  
See page 155 for more details.

## HTC/HWC XTREMEFLEX® HEATING CORDS

### Features & Benefits

- ▶ Designed for use on small tubes, vessels, or any application where space is limited
- ▶ Exceptional flexibility – can be wrapped around objects as small as 1/8 in (3 mm) diameter
- ▶ Rapid thermal response
- ▶ Grounded and non-grounded models
- ▶ Includes high-temperature tie downs for easy installation
- ▶ Versatile – Can wrap around and heat a wide range of objects – laboratory apparatus, glassware, pipes, weldments, etc.
- ▶ Solves a wide range of applications – examples include viscosity control, laboratory, temperature maintenance, and melting of solids
- ▶ Easy-to-use
- ▶ Suitable for high temperatures



Suitable for Electrically Conductive Surfaces



HTC Series



HWC Series



All Heating Cords

### Specifications

Series	Type	Maximum Exposure Temperature	Construction	Heater Diameter in (mm)	Watt Density watts/ft (watts/m)	Minimum Bend Radius in (mm)	IP Rating	Grounded	Lead Length ft (m)	Plug Type
HTC	Non-grounded	Single Install: Up to 932°F (500°C) Removable/Reusable: Up to 572°F (300°C)	Fiberglass	0.19 (4.8)	21 (68)	0.125 (3.0)	IP50		2 (0.6)	120 VAC: Separable 2-prong plug 240 VAC: Crimped ferrule leads
HWC	Non-grounded, high-watt density	Single Install: Up to 932°F (500°C) Removable/Reusable: Up to 572°F (300°C)	Samox	0.19 (4.8)	60 (196)	0.125 (3.0)	IP50		2 to 6 (0.6 to 1.8)	120 VAC: Separable 2-prong plug 240 VAC: Crimped ferrule leads

## HTC/HWC XTREMEFLEX® HEATING CORDS

### Ordering Information

#### HTC Series: 21 watts/ft (68 watts/m)

Part No. 120 VAC	Part No. 240 VAC	Cord Length ft (m)	Total Watts	Lead Length ft (m)
HTC451007	N/A	0.5 (0.15)	17	2 (0.6)
HTC451006	N/A	1 (0.3)	22	2 (0.6)
HTC451005	N/A	2 (0.6)	43	2 (0.6)
HTC451001	N/A	3 (0.9)	64	2 (0.6)
HTC451008	N/A	4 (1.2)	82	2 (0.6)
HTC451002	HTC452002	6 (1.8)	135	2 (0.6)
HTC451009	N/A	8 (2.4)	170	2 (0.6)
HTC451003	HTC452003	12 (3.7)	260	2 (0.6)

#### HWC Series: 60 watts/ft (196 watts/m)

Part No. 120 VAC	Part No. 240 VAC	Cord Length ft (m)	Total Watts	Lead Length ft (m)
HWC1040	N/A	4 (1.2)	266	2 (0.6)
HWC1060	N/A	6 (1.8)	350	2 (0.6)
HWC1120	HWC2120	12 (3.7)	750	6 (1.8)
HWC1180	HWC2180	18 (5.5)	1000	6 (1.8)
HWC1240	HWC2240	24 (7.3)	1440	6 (1.8)

### Accessories



Part No.	Description
<b>PSAT36A</b>	<b>Standard Fiberglass Tape</b> Suitable for general purpose applications Size: 1/2 in x 36 yd (12 mm x 33 m) Silicone Adhesive Temp Limit: 400°F (204°C)
<b>AAT2180</b>	<b>High Temperature Aluminum Tape</b> Designed for applications above 392°F (200°C) Size: 2 in x 180 ft (51 mm x 55 m) Silicone Adhesive w/ Liner Temp Limit: 550°F (288°C)



**IMPORTANT: Temperature controller is required for these products. See options starting on page 145. Custom Sizes and Designs Available: Contact BriskHeat® or your local distributor for more information.**

## TEMPERATURE CONTROLLERS & ACCESSORIES FOR HEATING TAPES

### Temperature Controllers

#### SDX Digital PID Benchtop Temperature Controller



- Advanced PID control
- Plug & play
- More information on page 160

#### SDC/SDCE Digital On/Off Benchtop Temperature Controller



- On/off control
- Plug & play
- More information starting on page 161

#### LYNX Temperature Control Sets



- Compact PID controller
- Can be used individually or linked together as a system
- Plug & play
- More information on page 155

#### TPO Time Percentage Dial Controller



- Adjusts the proportion of time a heater is on or off
- Plug & play
- More information on page 179

Full selection of temperature controllers starting on page 145.

### Adhesive Tape

Provides intimate contact with surface to be heated. A heating tape essential!

Part No.	Description
 PSAT36A	<b>Standard Fiberglass Tape</b> Suitable for general purpose applications Size: 0.5 in x 108 ft (13 mm x 38 m) Silicone Adhesive Temp Limit: 392°F (200°C)
 AAT25	<b>Standard Aluminum Tape</b> Suitable for general purpose applications Size: 2.5 in x 180 ft (64 mm x 55 m) Acrylic Adhesive w/Liner Temp Limit: 305°F (152°C) <b>NEW!</b>
 AAT260	<b>Extra-Strength Aluminum Tape</b> Enhanced Durability and Adhesion for More Rigorous Applications Size: 2 in x 180 ft (51 mm x 55 m) Acrylic Adhesive Temp Limit: 300°F (149°C)
 AAT2180	<b>High Temperature Aluminum Tape</b> Designed for applications above 392°F (200°C) Size: 2 in x 180 ft (51 mm x 55 m) Silicone Adhesive w/Liner Temp Limit: 550°F (288°C)

**NOTE:** Tape with acrylic adhesive should not be used with silicone heaters.

### Power Plugs

Choose a power plug for your heater that mates with your temperature control device. Complete selection found on page 180

Part No.	Description	Voltage (VAC)	Amps	Images
10113	NEMA 5-15P 2 pin, 3 wire (grounded)	125	15	
10478	NEMA 6-15P 2 pin, 3 wire (grounded)	250	15	
20978-03M	3 position Harting HAN Q2/0	600	15	
11670-04	IEC 14 2 pin, 3 wire	125/250	10 @ 250 VAC	
41289-05	Schuko CEE 7/7 2 pin, 3 wire	250	15	
41289-02	UK Type G 2 pin, 3 wire	250	15	

Custom Sizes and Designs Available: Contact BriskHeat® or your local distributor for more information.

“ Edwards Fiberglass Inc. has had the pleasure to work with BriskHeat for at least the last 15 years. Briskheat has shown exceptional knowledge in their products, availability when needed, and pricing is very competitive. BriskHeat also stands behind their product 100%. ”

~ Shane Edwards  
President/CEO of Edwards Fiberglass