

# FLEXIBLE HEATING TAPES & CORDS



**BriskHeat®**

**XtremeFLEX® HEATING TAPES/CORDS**

**Introduction to XtremeFLEX® Heating Tapes and Cords**

The flexible designs and high temperature capabilities of XtremeFLEX® Heating Tapes and Cords provide an ideal solution. Heating tapes and cords can be used on any surface requiring fast and efficient direct contact heating, up to temperatures of 1400°F (760°C).



**Temperatures  
Up to 1400°F (760°C)**



▶ **High Temperatures and Watt Densities**

- Rapid thermal response
- Temperatures up to 1400°F (760°C)
- Watt densities up to 13 W/in<sup>2</sup> (2.0 W/cm<sup>2</sup>)

▶ **Extremely Flexible and Versatile**

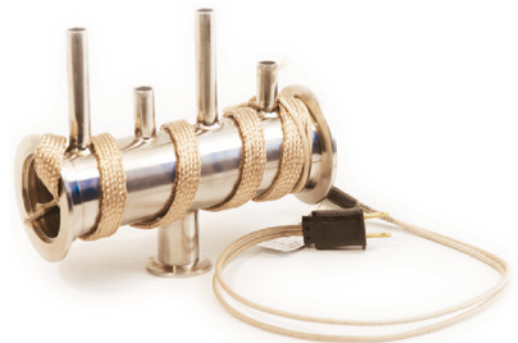
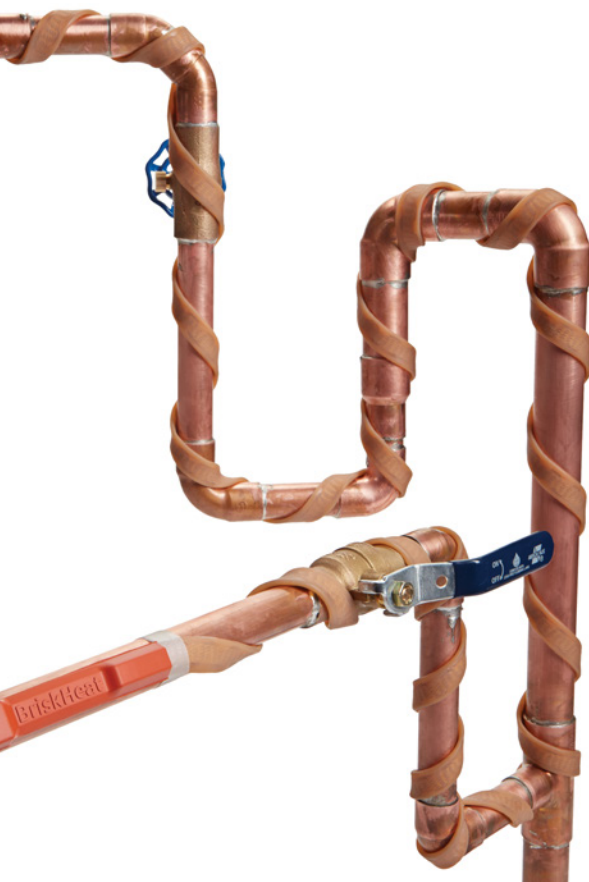
▶ **Plug-and-Play Options**

▶ **Rugged and Durable**

- Multi-stranded resistance wire
- Moisture and chemical resistance with silicone rubber sheath

▶ **Wide Range of Applications**

- Viscosity and temperature control
- Freeze protection
- Integrally heated tools
- Gas tubing
- Valves
- Laboratory apparatus
- Plastic bending
- External heating of dies and tools
- Temporary heat
- Hopper throat heater



**XtremeFLEX® HEATING TAPES/CORDS**

**XtremeFLEX® Heating Tapes and Cords Selection Guide**

**Silicone Rubber Heating Tapes**

Type	Series	Page	Maximum Exposure Temperature	Maximum Power Density watts/in <sup>2</sup> (watts/cm <sup>2</sup> )	Minimum Bend Radius in (mm)	Ingress Protection Rating	Built-in Control	Grounded	Suitable for Electrical Conductive Surfaces
Silicone Rubber Heating Tapes	BSO   BSO-G	2-4	450°F (232°C)	4.3 (0.7)	0.25 (6)	IP66		✓ Select models	✓
Long-Length Silicone Rubber Heating Tapes	RKF   RKH	2-6	450°F (232°C)	4.3 (0.7)	0.25 (6)	IP66			✓
Silicone Rubber Heating Tapes with Preset Thermostat	RKP	2-7	Varies	1.0 (0.16)	0.25 (6)	IP66	✓		✓
Silicone Rubber Heating Tapes with Adjustable Thermostat Control	HSTAT   MSTAT	2-8	Varies	6.0 (0.9)	0.25 (6)	IP54	✓	✓ Select models	✓
Silicone Rubber Heating Tapes with Time Percentage Dial Control	BSAT	2-10	450°F (232°C)	6.0 (0.9)	0.25 (6)	IP54	✓		✓
Cut-To-Length Silicone Rubber Heating Tapes	CTL	2-11	450°F (232°C)	Varies with length	0.25 (6)	IP54			✓

**Cloth Heating Tapes**

Type	Series	Page	Maximum Exposure Temperature	Maximum Power Density watts/in <sup>2</sup> (watts/cm <sup>2</sup> )	Minimum Bend Radius in (mm)	Ingress Protection Rating	Grounded	Suitable for Electrical Conductive Surfaces
Standard Insulated Cloth Heating Tapes	B00   BWO	2-12	932°F (500°C)	13.1 (2.0)	0.13 (3)	IP5X		
Heavy Insulated Cloth Heating Tapes	BIH   BWH	2-13	932°F (500°C)	13.1 (2.0)	0.25 (6)	IP5X		✓
Grounded Heavy Insulated Cloth Heating Tapes	BIH-G	2-13	482°F (250°C)	9.6 (1.5)	0.25 (6)	IP5X	✓	✓
Dual Element Heavy Insulated Cloth Heating Tapes	BWH-D	2-13	932°F (500°C)	13.1 (2.0)	0.25 (6)	IP5X		✓
High Temperature-Grounded Heavy Insulated Cloth Heating Tapes	BIHE	2-13	1400°F (760°C)	12.7 (2.0)	0.25 (6)	IP50	✓	✓
Plastic Bending Strip Heaters	RH	2-17	900°F (482°C)	8.6 (1.3)	0.13 (3)	IP5X		

**Heating Cords**

Type	Series	Page	Maximum Exposure Temperature	Maximum Power Density watts/ft (watts/m)	Minimum Bend Radius in (mm)	Ingress Protection Rating	Grounded	Suitable for Electrical Conductive Surfaces
Heating Cords	HTC   HWC	2-18	932°F (500°C)	60 (197)	0.13 (3)	IP5X		✓
High Temperature Grounded Heating Cords	HTCE	2-18	1400°F (760°C)	36 (120)	0.19 (5)	IP50	✓	✓

**XtremeFLEX® HEATING TAPES/CORDS**

**XtremeFLEX® Silicone Rubber Heating Tapes**  
(BS0 | BS0-G Series)

- ▶ Exceptional flexibility for a wide range of heating applications
- ▶ Moisture and chemical resistant – IP66 rated
- ▶ Rapid thermal response
- ▶ Wide range of sizes to choose from
- ▶ Grounded and non-grounded models
- ▶ Choice of power leads on same end or opposite ends

**Specifications:**

**Maximum Exposure Temperature:** 450°F (232°C)

**Outer Sheath:** Silicone rubber extruded

**Inner Construction:** Fiberglass knitted and braided construction

**Minimum Bend Radius:** 0.25 in (6 mm)

**Nominal Thickness:** 0.125 in (3 mm)

**Power density:** 4.3 W/in<sup>2</sup> (0.7 W/cm<sup>2</sup>)

**Voltage:** 120 or 240 VAC

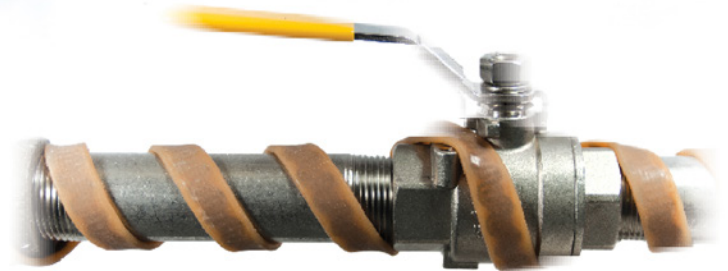
**Power Leads:** 2 ft (0.6 m) long with  
 120 VAC Non-grounded: Separable 2-prong plug  
 120 VAC Grounded: Bare wires  
 240 VAC: Crimped ferrule leads or bare wire leads. See ordering information for details

**Ingress Protection Rating:** IP66

**CE**  
Models with crimped ferrule or bare wire leads

**UL US**  
Approval valid only for bare wire models used in dry, indoor environments

**RoHS** 



Temperatures  
Up to  
450 °F (232 °C)



Moisture and  
Chemical  
Resistant



Suitable for  
Electrically  
Conductive Surfaces



**XtremeFLEX® HEATING TAPES/CORDS**

**XtremeFLEX® Silicone Rubber Heating Tapes continued**

(BS0 | BS0-G Series)

**Ordering Information:**

**BS0 series – Non-grounded**

Width in (mm)	Length ft (m)	Total Watts	Part No. 120VAC	Part No. 240VAC
0.5 (13)	2 (0.6)	52	<b>BS0051020L</b>	<b>BS0052020L**</b>
	4 (1.2)	104	<b>BS0051040L</b>	<b>BS0052040L**</b>
	6 (1.8)	156	<b>BS0051060L</b>	<b>BS0052060L**</b>
	8 (2.4)	209	<b>BS0051080L</b>	<b>BS0052080L**</b>
	10 (3.1)	261	<b>BS0051100L</b>	<b>BS0052100L**</b>
	12 (3.7)	313	<b>BS0051120L</b>	<b>BS0052120L**</b>
1.0 (25)	2 (0.6)	104	<b>BS0101020L</b>	<b>BS0102020L**</b>
	4 (1.2)	209	<b>BS0101040L</b>	<b>BS0102040L**</b>
	6 (1.8)	313	<b>BS0101060L</b>	<b>BS0102060L**</b>
	8 (2.4)	418	<b>BS0101080L</b>	<b>BS0102080L**</b>
	10 (3.1)	522	<b>BS0101100L</b>	<b>BS0102100L**</b>
	12 (3.7)	627	<b>BS0101120L</b>	<b>BS0102120L**</b>
	14 (4.3)	731	<b>BS0101140L</b>	<b>BS0102140L**</b>
	16 (4.9)	836	<b>BS0101160L</b>	<b>BS0102160L**</b>
18 (5.5)	940	<b>BS0101180L</b>	<b>BS0102180L**</b>	
20 (6.1)	1075/1045	<b>BS0101200L</b>	<b>BS0102200L**</b>	
2.0 (51)	2 (0.6)	209	<b>BS0201020L</b>	<b>BS0202020L*</b>
	4 (1.2)	418	<b>BS0201040L</b>	<b>BS0202040L*</b>
	6 (1.8)	627	<b>BS0201060L</b>	<b>BS0202060L*</b>
	8 (2.4)	836	<b>BS0201080L</b>	<b>BS0202080L*</b>
	10 (3.1)	1045	<b>BS0201100L</b>	<b>BS0202100L*</b>
	12 (3.7)	1254	<b>BS0201120L</b>	<b>BS0202120L*</b>
	14 (4.3)	1463	<b>BS0201140L</b>	<b>BS0202140L*</b>
	16 (4.9)	1672	<b>BS0201160L</b>	<b>BS0202160L*</b>
	18 (5.5)	1881	<b>BS0201180L*</b>	<b>BS0202180L*</b>
	20 (6.1)	2090	<b>BS0201200L*</b>	<b>BS0202200L*</b>

\*Bare wire, plug not included

\*\*Crimped ferrule leads

**Ordering option:** For a single power lead on opposite ends, remove "L" from end of part number.

**BS0-G series – Grounded**

Width in (mm)	Length ft (m)	Total Watts	Part No. 120VAC	Part No. 240VAC
1.0 (25)	2 (0.6)	104	<b>BS0101020LG</b>	<b>BS0102020LG</b>
	4 (1.2)	209	<b>BS0101040LG</b>	<b>BS0102040LG</b>
	6 (1.8)	313	<b>BS0101060LG</b>	<b>BS0102060LG</b>
	8 (2.4)	418	<b>BS0101080LG</b>	<b>BS0102080LG</b>
	10 (3.1)	522	<b>BS0101100LG</b>	<b>BS0102100LG</b>



**BS0 series – non-grounded**



**BS0-G series – Grounded**



**Adhesive Tape**

Provides intimate contact with surface to be heated. A heating tape essential!

Part Number	Material	Width in (mm)	Length Yards (m)	Temperature Limit
<b>PSAT36A</b>	Fiberglass	0.5 (13)	36 (32.9)	350°F (176°C)
<b>AAT260</b>	Aluminum	2.0 (51)	60 (54.8)	350°F (176°C)
<b>AAT2180</b>	Aluminum	2.0 (51)	60 (54.8)	550°F (288°C)



**IMPORTANT:** Temperature controller is required for these products. See options starting at [page 8-1](#).

**Custom Sizes and Designs Available:** Contact your local distributor or BriskHeat® for more information.

**XtremeFLEX® HEATING TAPES/CORDS**

**XtremeFLEX® Long-Length Silicone Rubber Heating Tapes (RKF | RKH Series)**

**NEW!**

- ▶ Exceptional flexibility and durability
- ▶ Standard lengths up to 200 ft (61 m)
- ▶ Moisture and chemical resistant – IP66 rated
- ▶ Suitable for electrically conductive surfaces



**Specifications:**

**Maximum Exposure Temperature:** 450°F (232°C)

**Minimum Bend Radius:** 0.25 in (6 mm)

**Power Density:**

RKF series – 1.0 W/in<sup>2</sup> (0.2 W/cm<sup>2</sup>)

RKH series – 2.0 W/in<sup>2</sup> (0.4 W/cm<sup>2</sup>)

Customs – up to 4.3 W/in<sup>2</sup> (0.7 W/cm<sup>2</sup>)

**Voltage:** 120 VAC or 240 VAC

**Power Cord:** Standard 5 ft (1.5 m) power cord with

120 VAC: 2-prong plug (NEMA 1-15P)

240 VAC: Crimped ferrule leads

**Ingress Protection Rating:** IP66



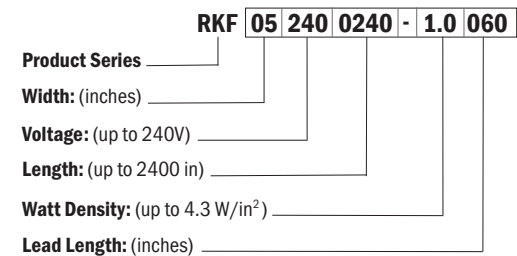
**CE** Models with crimped ferrule leads



**Ordering Information:**

Product Series & Watt Density	Width in (mm)	Length ft (m)	Watts	Part No. 120VAC	Part No. 240VAC
RKF series 1.0 W/in <sup>2</sup> (0.2 W/cm <sup>2</sup> )	0.5 (13)	10 (3.0)	60	RKF051200120	RKF052400120
		20 (6.1)	120	RKF051200240	RKF052400240
		40 (12.2)	240	RKF051200480	RKF052400480
		60 (18.3)	360	RKF051200720	RKF052400720
		80 (24.4)	480	RKF051200960	RKF052400960
		100 (30.5)	600	RKF051201200	RKF052401200
		150 (45.7)	900	RKF051201800	RKF052401800
RKH series 2.0 W/in <sup>2</sup> (0.4 W/cm <sup>2</sup> )	0.5 (13)	200 (70.0)	1200	RKF051202400	RKF052402400
		10 (3.0)	120	RKH051200120	RKH052400120
		20 (6.1)	240	RKH051200240	RKH052400240
		40 (12.2)	480	RKH051200480	RKH052400480
		60 (18.3)	720	RKH051200720	RKH052400720
		80 (24.4)	960	RKH051200960	RKH052400960
		100 (30.5)	1200	RKH051201200	RKH052401200
150 (45.7)	1800	N/A	RKH052401800		
200 (70.0)	2400	N/A	RKH052402400		

**Part Number Matrix for Other Configurations**



**Accessories:**

Adhesive Tape - Used for installation.

Part No.	Material	Width in (mm)	Length yd (m)	Temperature Limit
PSAT36A	Fiberglass	0.5 (13)	36 (33)	350°F (177°C)
AAT260	Aluminum	2.0 (51)	60 (55)	350°F (177°C)
AAT2180	Aluminum	2.0 (51)	60 (55)	550°F (288°C)

**IMPORTANT:** Temperature controller is required for this product. See options starting at 8-1.

**Custom Sizes and Designs Available:** Contact your local distributor or BriskHeat® for more information.

### XtremeFLEX® HEATING TAPES/CORDS

#### XtremeFLEX® Silicone Rubber Heating Tapes with Preset Thermostat

(RKP Series)

- ▶ Extremely flexible heating tape with pre-set thermostat: 70°F or 120°F (21°C or 49°C)
- ▶ Ideal for freeze protection and process control heating applications
- ▶ Moisture and chemical resistant – IP66 rated
- ▶ Lengths up to 200 ft (61 m)

**NEW!**



**PLUG  
and  
PLAY**



**Moisture and  
Chemical  
Resistant**

#### Specifications:

**Built-in Controlling Thermostat:** 70°F or 120°F (21°C or 49°C)

**Maximum Exposure Temperature:** 450°F (232°C)

**Outer Sheath:** Silicone rubber extruded

**Inner Construction:** Fiberglass knitted and braided construction

**Minimum Bend Radius:** 0.25 in (6 mm)

**Nominal Thickness:** 0.125 in (3 mm)

**Power Density:** 1.0 W / in<sup>2</sup> (0.2 W/cm<sup>2</sup>)

**Power Cord:** 5 ft (1.5 m) long with

120 VAC: standard 2-prong plug (NEMA 1-15)

240 VAC: crimped ferrule leads

**Ingress Protection Rating:** IP66



Models with crimped ferrule leads



#### Ordering Information:

Width in (mm)	Length ft (m)	Watts	Thermostat Setting 70°F (21°C)		Thermostat Setting 120°F (49°C)	
			Part No. 120 VAC	Part No. 240 VAC	Part No. 120 VAC	Part No. 240 VAC
0.5 (13)	6 (1.8)	50	RKP1A0072	RKP2A0072	RKP1B0072	RKP2B0072
	8 (2.4)	55	RKP1A0096	RKP2A0096	RKP1B0096	RKP2B0096
	10 (3.0)	60	RKP1A0120	RKP2A0120	RKP1B0120	RKP2B0120
0.5 (13)	20 (6.1)	120	RKP1A0240	RKP2A0240	RKP1B0240	RKP2B0240
	40 (12.2)	240	RKP1A0480	RKP2A0480	RKP1B0480	RKP2B0480
	50 (15.2)	300	RKP1A0600	RKP2A0600	RKP1B0600	RKP2B0600
	60 (18.3)	360	RKP1A0720	RKP2A0720	RKP1B0720	RKP2B0720
	75 (22.9)	450	RKP1A0900	RKP2A0900	RKP1B0900	RKP2B0900
0.5 (13)	80 (24.4)	480	RKP1A0960	RKP2A0960	RKP1B0960	RKP2B0960
	100 (30.5)	600	RKP1A1200	RKP2A1200	RKP1B1200	RKP2B1200
	125 (38.1)	750	RKP1A1500	RKP2A1500	RKP1B1500	RKP2B1500
	150 (45.7)	900	N/A	RKP2A1800	N/A	RKP2B1800
	200 (61.0)	1200	N/A	RKP2A2400	N/A	RKP2B2400

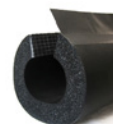
#### Accessories:



**Fiberglass Adhesive Tape**  
Part No. PSAT36A  
Size: 0.5 in x 36 yd (13 mm x 38 m)  
**Maximum Exposure Temperature:**  
350°F (176°C)



**GFCI adapter**  
Part No. GFCI01  
Converts a standard outlet into a GFCI protected outlet. For 120 VAC use, max 15 A.



**INSUL-LOCK® DS Foam Insulation**  
Premium insulation with adhesive flap. For pipe diameters 0.5 in - 4 in (13 mm - 102 mm). Size: See catalog ordering information.

**Custom Sizes and Designs Available:** Contact your local distributor or BriskHeat® for more information.

**XtremeFLEX® HEATING TAPES/CORDS**

**XtremeFLEX® Silicone Rubber Heating Tapes with Adjustable Thermostat Control**

(HSTAT | MSTAT | HSTAT-G Series)

- ▶ **Extremely flexible — Heats a wide range of objects quickly**
- ▶ **Adjustable thermostat control — Choice of two temperature ranges: Up to 160°F and 425°F (71°C and 218°C)**
- ▶ **Moisture and chemical resistant —IP 54 rated**
- ▶ **Grounded and non-grounded models**

**Benefits:**

- Can wrap around and heat a wide range of objects — valves, pipes, bearings, pumps, gas tubing, filter housings, actuators, and more
- Solves a wide range of applications — examples include viscosity control, freeze protection, emergency de-icing, temperature maintenance, supplemental heat, and melting of solids
- Easy-to-use — simple plug-and-play design
- Rugged — provides long service life and can be used in a wide variety of environments

**Specifications:**

- Maximum Exposure Temperature:** 450°F (232°C)
- Minimum Bend Radius:** 0.250 in (6 mm)
- Nominal Thickness:** 0.125 in (3 mm)
- Power Density:** 6.0 W/in<sup>2</sup> (0.9 W/cm<sup>2</sup>)†
- Power Cord:** 6 ft (1.8 m) long with  
120 VAC Non-grounded: 2-prong plug (NEMA 1-15P)  
120 VAC Grounded: 3-prong plug (NEMA 5-15P)  
240 VAC: Crimped ferrule leads
- Ingress Protection Rating:** IP54

**CE** Models with crimped ferrule leads



If precise temperature control is required for your application, please contact BriskHeat or your local distributor for application assistance and product solutions.

† Reduced watt density as low as 2.4 W/in<sup>2</sup> (0.4 W/cm<sup>2</sup>) for longer length heating tapes.



**Moisture and Chemical Resistant**



**Suitable for Electrically Conductive Surfaces**



**Easy-to-use adjustable thermostat**



**XtremeFLEX® HEATING TAPES/CORDS**

**XtremeFLEX® Silicone Rubber Heating Tapes with Adjustable Thermostat Control continued**

(HSTAT | MSTAT | HSTAT-G Series)

**Ordering Information:**

**Non-grounded**

**NEW!**

**HSTAT series – Temperature Range: Up to 425°F (218°C)**

- Ideal for higher temperature applications. For temperatures below 160°F (71°C), see MSTAT series below

Width in (mm)	Length ft (m)	Total Watts	Part No. 120 VAC	Part No. 240 VAC
0.5 (13)	2 (0.6)	72	HSTAT051002	HSTAT052002
	4 (1.2)	144	HSTAT051004	HSTAT052004
	6 (1.8)	216	HSTAT051006	HSTAT052006
	8 (2.4)	288	HSTAT051008	HSTAT052008
	10 (3.1)	360	HSTAT051010	HSTAT052010
1.0 (25)	2 (0.6)	144	HSTAT101002	HSTAT102002
	4 (1.2)	288	HSTAT101004	HSTAT102004
	6 (1.8)	432	HSTAT101006	HSTAT102006
	8 (2.4)	576	HSTAT101008	HSTAT102008
	10 (3.1)	720	HSTAT101010	HSTAT102010
2.0 (51)	2 (0.6)	288	HSTAT201002	HSTAT202002
	4 (1.2)	576	HSTAT201004	HSTAT202004
	6 (1.8)	864	HSTAT201006	HSTAT202006
	8 (2.4)	1152	HSTAT201008	HSTAT202008
	10 (3.1)	1440	HSTAT201010	HSTAT202010
3.0 (76)	2 (0.6)	432	HSTAT301002	HSTAT302002
	4 (1.2)	864	HSTAT301004	HSTAT302004
	6 (1.8)	1296	HSTAT301006	HSTAT302006
	8 (2.4)	1440	HSTAT301008	HSTAT302008
	10 (3.1)	1440/1800	HSTAT301010	HSTAT302010

**MSTAT series –Temperature Range: Up to 160°F (71°C)**

- Will not overheat contents or melt PVC pipe and vessels
- Enhanced precision for lower-temperature applications

Width in (mm)	Length ft (m)	Total Watts	Part No. 120 VAC	Part No. 240 VAC
1.0 (25)	2 (0.6)	144	MSTAT101002	MSTAT102002
	4 (1.2)	288	MSTAT101004	MSTAT102004
	6 (1.8)	432	MSTAT101006	MSTAT102006
	8 (2.4)	576	MSTAT101008	MSTAT102008
	10 (3.1)	720	MSTAT101010	MSTAT102010
	15 (4.5)	1080	MSTAT101015	MSTAT102015
	20 (6.0)	1200	MSTAT101020	MSTAT102020
	30 (9.1)	1440	MSTAT101030*	MSTAT102030*
	40 (12.2)	1440	MSTAT101040*	MSTAT102040*
	50 (15.2)	1440	MSTAT101050*	MSTAT102050*

\*Reduced watt density



**HSTAT-G series – Grounded**

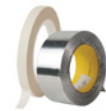
**Temperature Range: Up to 425°F (218°C)**

**NEW!**

Width in (mm)	Length ft (m)	Total Watts	Part No. 120 VAC	Part No. 240 VAC
1.0 (25)	2 (0.6)	144	HSTAT101002G	HSTAT102002G
	4 (1.2)	288	HSTAT101004G	HSTAT102004G
	6 (1.8)	432	HSTAT101006G	HSTAT102006G
	8 (2.4)	576	HSTAT101008G	HSTAT102008G
	10 (3.1)	720	HSTAT101010G	HSTAT102010G

**Adhesive Tape**

Provides intimate contact with surface to be heated. A heating tape essential!



Part Number	Material	Width in (mm)	Length Yards (m)	Temperature Limit
PSAT36A	Fiberglass	0.5 (13)	36 (32.9)	350°F (176°C)
AAT260	Aluminum	2.0 (51)	60 (54.8)	350°F (176°C)
AAT2180	Aluminum	2.0 (51)	60 (54.8)	550°F (288°C)

**Custom Sizes and Designs Available: Contact your local distributor or BriskHeat® for more information.**

**XtremeFLEX® HEATING TAPES/CORDS**

**XtremeFLEX® Silicone Rubber Heating Tapes with Time Percentage Control (BSAT Series)**

- ▶ **Extremely flexible** — Heats a wide range of objects quickly
- ▶ **Time percentage control** — Easily adjust of time heater is on and off: 5 to 100%
- ▶ **Moisture and chemical resistant** —IP 54 rated
- ▶ **Ideal for a wide range of temporary heating applications and surfaces:** laboratory, valves, facilities maintenance, and more

**Specifications:**

**Maximum Exposure Temperature:** 450°F (232°C)  
**Minimum Bend Radius:** 0.250 in (6 mm)  
**Nominal Thickness:** 0.125 in (3 mm)  
**Power Density:** 6.0 W/in<sup>2</sup> (0.9 W/cm<sup>2</sup>)  
**Power Cord:** 6 ft (1.8 m) long with 120 VAC Non-grounded: 2-prong plug (NEMA 1-15P) 240 VAC: Bare wire leads  
**Ingress Protection Rating:** IP54



Models with bare wire leads



**Ordering Information:**

Width in (mm)	Length ft (m)	Total Watts	Part No. 120 VAC	Part No. 240 VAC
0.5 (13)	2 (0.6)	72	BSAT051002	BSAT052002
	4 (1.2)	144	BSAT051004	BSAT052004
	6 (1.8)	216	BSAT051006	BSAT052006
	8 (2.4)	288	BSAT051008	BSAT052008
	10 (3.1)	360	BSAT051010	BSAT052010
1.0 (25)	2 (0.6)	144	BSAT101002	BSAT102002
	4 (1.2)	288	BSAT101004	BSAT102004
	6 (1.8)	432	BSAT101006	BSAT102006
	8 (2.4)	576	BSAT101008	BSAT102008
	10 (3.1)	720	BSAT101010	BSAT102010
2.0 (51)	2 (0.6)	288	BSAT201002	BSAT202002
	4 (1.2)	576	BSAT201004	BSAT202004
	6 (1.8)	864	BSAT201006	BSAT202006
	8 (2.4)	1152	BSAT201008	BSAT202008
	10 (3.1)	1440	BSAT201010	BSAT202010
3.0 (76)	2 (0.6)	432	BSAT301002	BSAT302002
	4 (1.2)	864	BSAT301004	BSAT302004
	6 (1.8)	1296	BSAT301006	BSAT302006
	8 (2.4)	1440	BSAT301008	BSAT302008
	10 (3.1)	1440/1800	BSAT301010	BSAT302010



**Moisture and Chemical Resistant**



**Suitable for Electrically Conductive Surfaces**

**What is a Time Percentage Control?**

The time percentage controller varies the proportion (length) of time the heater is in the “on” or “off” heating mode. The heating application will determine the actual percentage set-point required. The controller does not use a temperature sensor and therefore satisfactory operation requires occasional supervision under changing load conditions.



**Adhesive Tape**

Provides intimate contact with surface to be heated. A heating tape essential!

Part Number	Material	Width in (mm)	Length Yards (m)	Temperature Limit
PSAT36A	Fiberglass	0.5 (13)	36 (32.9)	350°F (176°C)
AAT260	Aluminum	2.0 (51)	60 (54.8)	350°F (176°C)
AAT2180	Aluminum	2.0 (51)	60 (54.8)	550°F (288°C)

**Custom Sizes and Designs Available:** Contact your local distributor or BriskHeat® for more information.

**XtremeFLEX® HEATING TAPES/CORDS**

**XtremeFLEX® Cut-To-Length Silicone Rubber Heating Tapes (CTL Series)**

- ▶ **Exceptional flexibility** — well suited for pipeline tracing
- ▶ **Can be cut-to-length at job site**
- ▶ **Moisture and chemical resistant** — IP54 rated
- ▶ **Rapid thermal response**

**Specifications:**

**Maximum Exposure Temperature:** 450°F (232°C)

**Outer Sheath:** Silicone rubber extruded

**Inner Construction:** Fiberglass knitted and braided construction

**Minimum Bend Radius:** 0.25 in (6 mm)

**Nominal Thickness:** 0.125 in (3 mm)

**Ingress Protection Rating:** IP54



**Ordering Information:**

**Cut-To-Length Heating Tape**

Part No.	Ohms Per ft (m)	Volts	Min ft (m)	Max ft (m)	Width in (mm)
CTL-A	0.10 (0.328)	120 VAC	57 (17)	220 (67)	1 (25)
		240 VAC	114 (35)	440 (134)	
CTL-B	0.90 (2.953)	120 VAC	19 (6)	74 (23)	1 (25)
		240 VAC	38 (12)	146 (45)	
CTL-C	10.00 (32.808)	120 VAC	6 (2)	22 (7)	1 (25)
		240 VAC	12 (4)	44 (13)	

Available factory finished for immediate use, consult factory for details.

**Cut-To-Length Termination Kits**

Part No.	Type	Description	Usage
CTLLK	Lead Kit	<ul style="list-style-type: none"> <li>• Crimp-on wire terminals</li> <li>• Heavy-duty joint cover</li> <li>• 8 ft (2.4 m) 16 AWG high temperature leads covered with insulating sleeve</li> </ul>	Connects main power supply to heating tape.
CTLEK	End Kit	<ul style="list-style-type: none"> <li>• Crimp-on wire terminals</li> <li>• Heavy-duty joint cover</li> </ul>	Terminates the end of the heating tape.
CTLTK	Tee Kit	<ul style="list-style-type: none"> <li>• Crimp-on wire terminals</li> <li>• Heavy-duty joint covers</li> <li>• 1 ft (0.3 m) 16 AWG high-temperature leads covered with insulating sleeve</li> <li>• 1 end kit</li> </ul>	Joins three segments of heating tape.
CTLJK	Jumper Kit	<ul style="list-style-type: none"> <li>• Heavy-duty joint cover</li> <li>• 2 ft (0.6 m) 16 AWG high-temperature leads covered with insulating sleeve</li> </ul>	Makes a splice/jumper combining two segments of heating tape.

NOTE: Cut-to-length termination kits require RTV adhesive and adhesive tape.



**What is cut-to-length heating tape?**

Cut-to-length heating tape is a series heating element design; wattages and amperages vary with the tape length. Contact BriskHeat to determine the actual wattage output for your given application.

**IMPORTANT: Temperature controller is required for this product. See options starting at page 8-1.**



**Adhesive Tape**

Provides intimate contact with surface to be heated. A heating tape essential!

Part No.	Material	Width in (mm)	Length Yards (m)	Temperature Limit
PSAT36A	Fiberglass	0.5 (13)	36 (32.9)	350°F (176°C)
AAT260	Aluminum	2.0 (51)	60 (54.8)	350°F (176°C)
AAT2180	Aluminum	2.0 (51)	60 (54.8)	550°F (288°C)

**RTV Sealant**

Silicone sealant used to seal connection kit.



Part No.	Description
RTV3.0	3 oz. (89 ml)

**XtremeFLEX® HEATING TAPES/CORDS**

**XtremeFLEX® Standard Insulated Cloth Heating Tapes**  
(B00 | BW0 Series)

- ▶ Excellent flexibility
- ▶ Rapid thermal response
- ▶ Suitable for non-conductive electrical surfaces only (i.e. glass)
- ▶ Choice of power leads on same end or opposite ends
- ▶ Includes high-temperature tie-downs for easy installation



**Specifications:**

**Maximum Exposure Temperature:**  
Single Install: Up to 932°F (500°C)  
Removable/Reusable: Up to 572°F (300°C)

**Construction:**  
B00 series: fiberglass knitted and braided  
BW0 series: Samox® knitted and braided

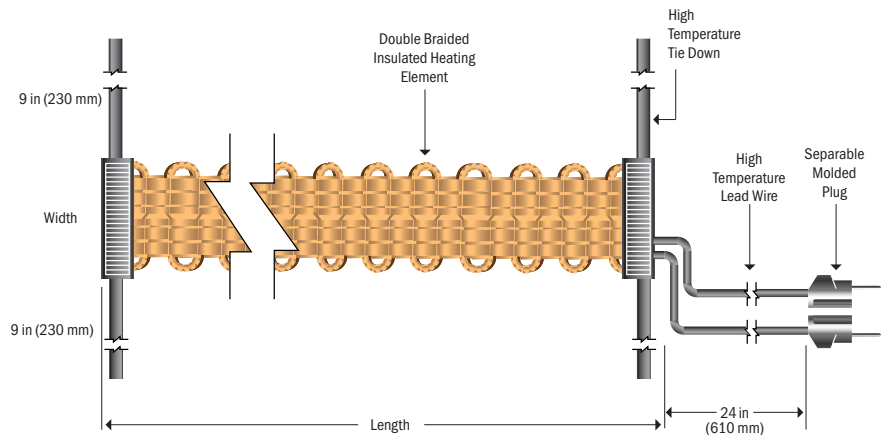
**Power Density:**  
B00 series: 8.6 W/in<sup>2</sup> (1.3 W/cm<sup>2</sup>)  
BW0 series: 13.1 W/in<sup>2</sup> (2.0 W/cm<sup>2</sup>)

**Voltage:** 120 or 240 VAC

**Minimum Bend Radius:** 0.13 in (3 mm)

**Power Leads:** 2 ft (0.6 m) long with  
120 VAC: Separable 2-prong plug  
240 VAC: Bare wire leads

**Ingress Protection Rating:** IP5X



**Ordering Information:**

**B00 Series** – 8.6 W/in<sup>2</sup> (1.3 W/cm<sup>2</sup>) watt density  
Power Leads on Same End

Width in (mm)	Length ft (m)	Total Watts	Part No. 120 VAC	Part No. 240 VAC
0.5 (13)	2 (0.6)	105/100	B00051020L	B00052020L
	4 (1.2)	210	B00051040L	B00052040L
	6 (1.8)	310	B00051060L	B00052060L
	8 (2.4)	420	B00051080L	B00052080L
1.0 (25)	10 (3.1)	520	B00051100L	B00052100L
	2 (0.6)	210	B00101020L	B00102020L
	4 (1.2)	420	B00101040L	B00102040L
1.0 (25)	6 (1.8)	620	B00101060L	B00102060L
	8 (2.4)	830	B00101080L	B00102080L
	10 (3.1)	1045	N/A	B00102100L

**BW0 Series** – 13.1 W/in<sup>2</sup> (2.0 W/cm<sup>2</sup>) watt density  
Power Leads on Same End

Width in (mm)	Length ft (m)	Total Watts	Part No. 120 VAC	Part No. 240 VAC
0.5 (13)	2 (0.6)	160	BW0051020L	BW0052020L
	4 (1.2)	310	BW0051040L	BW0052040L
	6 (1.8)	470	BW0051060L	BW0052060L
	8 (2.4)	620	BW0051080L	BW0052080L
	10 (3.1)	780	N/A	BW0052100L
	12 (3.7)	940	N/A	BW0052120L
1.0 (25)	2 (0.6)	310	BW0101020L	BW0102020L
	4 (1.2)	620	BW0101040L	BW0102040L
	6 (1.8)	940	N/A	BW0102060L
	8 (2.4)	1250	N/A	BW0102080L

Ordering option: For a single power lead on opposite ends, remove "L in from end of part number

**IMPORTANT: Temperature controller is required for this product. See options starting at page 8-1.**

## XtremeFLEX® HEATING TAPES/CORDS

### XtremeFLEX® Heavy Insulated Cloth Heating Tapes

(BIH | BWH | BIH-G | BWH-D | BIHE Series)

- ▶ Exceptional flexibility for a wide range of applications
- ▶ Rapid thermal response
- ▶ Wide range of sizes and watt-densities to choose from
- ▶ Grounded and non-grounded models
- ▶ Includes high-temperature tie-downs for easy installation

#### Benefits:

- Versatile – Can wrap around and heat a wide range of objects – laboratory apparatus, glassware, pipes, weldments, etc.
- Solves a wide range of applications – examples include viscosity control, laboratory, temperature maintenance, and melting of solids
- Easy-to-use
- Suitable for high temperatures



**Suitable for  
Electrically  
Conductive Surfaces**



**NEW!**

**High-Temperature & Grounded  
Flexible Heating Tape (BIHE) –  
CE Approved - Page 2-16**

**XtremeFLEX® HEATING TAPES/CORDS**

**XtremeFLEX® Heavy Insulated Cloth Heating Tapes**

(BIH | BWH | BIH-G | BWH-D | BIHE Series)

**Specifications and Selection Guide:**

Series	Type	Maximum Exposure Temperature	Construction	Watt Density W/in <sup>2</sup> (W/cm <sup>2</sup> )	Ingress Protection Rating	Grounded	Lead Length ft (m)	Plug Type	Ordering Page
<b>BIH</b>	Non-grounded	Single Install: Up to 932°F (500°C) Removable/Reusable: Up to 572°F (300°C)	Fiberglass	Standard: 8.6 (1.3) Wide †: 5.1 (0.8)	IP5X		2 (0.6)	120 VAC: Separable 2-prong plug 240 VAC: Bare wire or crimped ferrule leads	2-15
<b>BWH</b>	Non-grounded, high-watt density	Single Install: Up to 932°F (500°C) Removable/Reusable: Up to 572°F (300°C)	Samox®	Standard: 13.1 (2.0) Wide †: 5.1 (0.8)	IP5X		2 (0.6)	120 VAC: Separable 2-prong plug 240 VAC: Bare wire or crimped ferrule leads	2-15
<b>BIH-G</b>	Grounded	Up to 482°F (250°C)	Fiberglass	9.6 (1.5)	IP5X		2 (0.6)	Bare wire leads	2-15
<b>BWH-D</b>	Dual element – increased flexibility	Single Install: Up to 932°F (500°C) Removable/Reusable: Up to 572°F (300°C)	Samox®	13.1 (2.0)	IP5X		2 (0.6)	120 VAC: 2-prong plug (NEMA1-15P) 240 VAC: Bare wire leads	2-16
<b>BIHE</b>	High temperature, grounded  CE approved	Single Install: Up to 1400°F (760°C) Removable/Reusable: Up to 842°F (450°C)	Samox®	3.8 (0.6) 7.6 (1.2) 12.7 (2.0)	IP50		5 (1.5)	Crimped ferrule leads	2-16

† 1.75 in (44 mm) wide tape or greater



All Heavy Insulated Cloth Heating Tapes



**XtremeFLEX® HEATING TAPES/CORDS**

**XtremeFLEX® Heavy Insulated Cloth Heating Tapes**

(BIH | BWH | BIH-G | BWH-D | BIHE Series)

**Ordering Information:**

**BIH series: Non-grounded 8.6 W/in<sup>2</sup> (1.3 W/cm<sup>2</sup>)**

Single Install: Up to 932°F (500°C)      Removable/Reusable: Up to 572°F (300°C)      Power Leads on Same End

Width in (mm)	Length ft (m)	Total Watts	Part No. 120 VAC	Part No. 240 VAC
0.50 (13)	2 (0.6)	105	BIH051020L	BIH052020L**
	4 (1.2)	210	BIH051040L	BIH052040L**
	6 (1.8)	310	BIH051060L	BIH052060L**
	8 (2.4)	420	BIH051080L	BIH052080L**
	10 (3.1)	520	BIH051100L	BIH052100L**
	12 (3.7)	620	BIH051120L	BIH052120L**
1.00 (25)	1 (0.3)	105	BIH101010L	N/A
	2 (0.6)	210	BIH101020L	BIH102020L**
	4 (1.2)	420	BIH101040L	BIH102040L**
	6 (1.8)	620	BIH101060L	BIH102060L**
	8 (2.4)	830	BIH101080L	BIH102080L**
	10 (3.1)	1045	BIH101100L	BIH102100L**
1.75 (44)	2 (0.6)	209	BIH171020L	BIH172020L*
	4 (1.2)	418	BIH171040L	BIH172040L*
	6 (1.8)	627	BIH171060L	BIH172060L*
	8 (2.4)	836	BIH171080L	BIH172080L*
	10 (3.1)	1045/1040	BIH171100L	BIH172100L*
2.50 (64)	2 (0.6)	313	BIH251020L	BIH252020L*
	4 (1.2)	627	BIH251040L	BIH252040L*
	6 (1.8)	940	BIH251060L	BIH252060L*
	8 (2.4)	1254	BIH251080L	BIH252080L*
	10 (3.1)	1567	BIH251100L	BIH252100L*
3.25 (83)	2 (0.6)	418	BIH321020L	BIH322020L*
	4 (1.2)	836	BIH321040L	BIH322040L*
	6 (1.8)	1254	BIH321060L	BIH322060L*
	8 (2.4)	1672	BIH321080L*	BIH322080L*
	10 (3.1)	2090	BIH321100L*	BIH322100L*

\*Bare wire, plug not included

\*\*Ferrule crimp wire termination

**Ordering option:** For a single power lead on opposite ends, remove "L" from end of part number. (BIH and BWH series)

**BIH-G series: Grounded**

Up to 482°F (250°C)

Width in (mm)	Length ft (m)	Total Watts	Part No. 120 VAC	Part No. 240 VAC
1.0 (25)	2 (0.6)	230	BIH101020LG	BIH102020LG
	4 (1.2)	460	BIH101040LG	BIH102040LG
	6 (1.8)	690	BIH101060LG	BIH102060LG
	8 (2.4)	920	BIH101080LG	BIH102080LG
10 (3.1)	1150	BIH101100LG	BIH102100LG	



BIH & BWH series

**BWH series: Non-grounded 13.1 W/in<sup>2</sup> (2.0 W/cm<sup>2</sup>)**

Single Install: Up to 932°F (500°C)      Removable/Reusable: Up to 572°F (300°C)      Power Leads on Same End

Width in (mm)	Length ft (m)	Total Watts	Part No. 120 VAC	Part No. 240 VAC
0.50 (13)	2 (0.6)	156	BWH051020L	BWH052020L**
	4 (1.2)	313	BWH051040L	BWH052040L**
	6 (1.8)	470	BWH051060L	BWH052060L**
	8 (2.4)	627	BWH051080L	BWH052080L**
	10 (3.1)	783	N/A	BWH052100L**
	12 (3.7)	940	N/A	BWH052120L**
1.00 (25)	2 (0.6)	313	BWH101020L	BWH102020L**
	4 (1.2)	627	BWH101040L	BWH102040L**
	6 (1.8)	940	BWH101060L	BWH102060L**
	8 (2.4)	1254/1245	BWH101080L	BWH102080L**
	10 (3.1)	1570/1567	N/A	BWH102100L**
1.75 (44)	2 (0.6)	313	BWH171020L	BWH172020L*
	4 (1.2)	627	BWH171040L	BWH172040L*
	6 (1.8)	940	BWH171060L	BWH172060L*
	8 (2.4)	1254	BWH171080L	BWH172080L*
	10 (3.1)	1570	BWH171100L	BWH172100L*
2.50 (64)	2 (0.6)	470	BWH251020L	BWH252020L*
	4 (1.2)	940	BWH251040L	BWH252040L*
	6 (1.8)	1411	BWH251060L	BWH252060L*
	8 (2.4)	1881	BWH251080L*	BWH252080L*
	10 (3.1)	2351	N/A	BWH252100L*
3.25 (83)	2 (0.6)	627	BWH321020L	BWH322020L*
	4 (1.2)	1254	BWH321040L	BWH322040L*
	6 (1.8)	1881	BWH321060L*	BWH322060L*
	8 (2.4)	2508	BWH321080L*	BWH322080L*
	10 (3.1)	3135	BWH321100L*	BWH322100L*



BIH-G Series – Grounded

**IMPORTANT:** Temperature controller is required for these products. See options starting at [page 8-1](#).

**Custom Sizes and Designs Available:** Contact your local distributor or BriskHeat® for more information.

**XtremeFLEX® HEATING TAPES/CORDS**

**XtremeFLEX® Heavy Insulated Cloth Heating Tapes (BIH | BWH | BIH-G | BWH-D | BIHE Series)**

**Ordering Information:**

**BWH-D series: Dual element** – increased flexibility

Single Install: Up to 932°F (500°C)      Removable/Reusable: Up to 572°F (300°C)

Width in (mm)	Length ft (m)	Total Watts	Part No. 120 VAC	Part No. 240 VAC
0.5 (13)	2 (0.6)	156	BWH051020LD	BWH052020LD*
	4 (1.2)	312	BWH051040LD	BWH052040LD*
	6 (1.8)	468	BWH051060LD	BWH052060LD*
	8 (2.4)	624	BWH051080LD	BWH052080LD*
	10 (3.1)	780	BWH051100LD	BWH052100LD*
1.0 (25)	2 (0.6)	312	BWH101020LD	BWH102020LD*
	4 (1.2)	624	BWH101040LD	BWH102040LD*
	6 (1.8)	936	BWH101060LD	BWH102060LD*
	8 (2.4)	1248	BWH101080LD	BWH102080LD*

\*Bare wire, plug not included



BWH-D Series – Dual Element

**BIHE series: High Temperature, Grounded**

Single Install: Up to 1400°F (760°C)      Removable/Reusable: Up to 842°F (450°C)



**NEW!**

Width in (mm)	Volts	Length ft (m)	Part No. 3.8 W/in <sup>2</sup> (0.6 W/cm <sup>2</sup> )	Part No. 7.6 W/in <sup>2</sup> (1.2 W/cm <sup>2</sup> )	Part No. 12.7 W/in <sup>2</sup> (2.0 W/cm <sup>2</sup> )
1.0 (25)	240	3.3 (1.0)	BIHE25210150L	BIHE25210300L	BIHE25210500L
		4.9 (1.5)	BIHE25215150L	BIHE25215300L	BIHE25215500L
		6.6 (2.0)	BIHE25220150L	BIHE25220300L	BIHE25220500L
		8.2 (2.5)	BIHE25225150L	BIHE25225300L	N/A
		9.8 (3.0)	BIHE25230150L	BIHE25230300L	BIHE25230500L**
		11.5 (3.5)	BIHE25235150L	BIHE25235300L**	BIHE25235500L**

\*\*Maximum exposure temperature up to 842°F (450°C)



BIHE Series – High Temperature, Grounded

**IMPORTANT: Temperature controller is required for these products. See options starting at page 8-1.**

**Custom Sizes and Designs Available: Contact your local distributor or BriskHeat® for more information.**



**Value bundles that include a temperature controller and heater are available for a wide variety of heating tapes and cords. See selection starting on page 8-18**



**XtremeFLEX® HEATING TAPES/CORDS**

**Plastic Bending Strip Heaters**

(RH Series)

- ▶ Heating element used for plastic acrylic bending applications
- ▶ Provides radiant line of heat for controlled bending
- ▶ Multi-stranded resistance wire heating element provides exceptional flexibility and durability

**Benefits:**

- Quickly softens acrylic and plastic sheets for easy bending
- Ideal for plastic photo frames, sneeze guards, arts and crafts, custom workshop fabricating, and more
- Radiant heat – heater never comes in contact with plastic
- Easy-to-use – designed for production use and for hobbyists

**Specifications:**

**Maximum Exposure Temperature:** Up to 900°F (482°C)

**Construction:** Fiberglass knitted and braided

**Power Density:** 8.6 W/in<sup>2</sup> (1.3 W/cm<sup>2</sup>)

Voltage: 120 VAC

**Minimum Bend Radius:** 0.13 in (3 mm)

**Power Leads:** 2 ft (0.6 m) long with separable 2-prong plug

**Ingress Protection Rating:** IP5X

NOTE: Suitable for non-conductive surfaces only



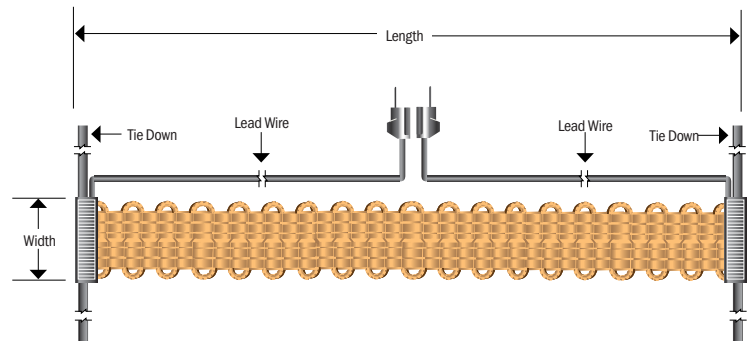
**Ordering Information:**

**RH series – Plastic Bending Strip Heaters**

Includes heating element and instructions for building a complete plastic bending set-up. Other materials are required.

Width in (mm)	Length ft (m)	Total Watts	Part No. 120 VAC
	2 (0.6)	105	RH24
0.5 (13)	3 (0.9)	157	RH36
	4 (1.2)	209	RH48

**Custom Sizes and Designs Available:** Contact your local distributor or BriskHeat® for more information.



**Recommended Controllers**

Temperature controller or close supervision is required for safe operation.



**TPO series Time Percentage Controller** – See page 8-39 for more details



**SDC series Digital Benchtop On/Off Controller** – See page 8-12 for more details



**NEW LYNX® PID Temperature Control Set** – See page 8-10 for more details

**XtremeFLEX® HEATING TAPES/CORDS**

**XtremeFLEX® Heating Cords**

(HTC | HWC | HTCE Series)

- ▶ Designed for use on small tubes, vessels, or any application where space is limited
- ▶ Exceptional flexibility – can be wrapped around objects as small as 0.125 in (3 mm) diameter
- ▶ Rapid thermal response
- ▶ Grounded and non-grounded models
- ▶ Includes high-temperature tie-downs for easy installation

**Benefits:**

- Versatile – Can wrap around and heat a wide range of objects – laboratory apparatus, glassware, pipes, weldments, etc.
- Solves a wide range of applications – examples include viscosity control, laboratory, temperature maintenance, and melting of solids
- Easy-to-use
- Suitable for high temperatures



**Suitable for Electrically Conductive Surfaces**



HTC Series



HWC Series

**NEW!**



HTCE Series – High-temperature grounded, CE approved

**XtremeFLEX® HEATING TAPES/CORDS**

**XtremeFLEX® Heating Cords continued**

(HTC | HWC | HTCE Series)

**Specifications:**

Series	Type	Maximum Exposure Temperature	Construction	Heater Diameter in (mm)	Watt Density W/ft (W/m)	Minimum Bend Radius in (mm)	Ingress Protection Rating	Grounded	Lead Length ft (m)	Plug Type
HTC	Non-grounded	Single Install: Up to 932°F (500°C) Removable/Reusable: Up to 572°F (300°C)	Fiberglass	0.19 (4.8)	21 (68)	0.125 (3.0)	IP5X		2 (0.6)	120 VAC: Separable 2-prong plug 240 VAC: Crimped ferrule leads
HWC	Non-grounded, high-watt density	Single Install: Up to 932°F (500°C) Removable/Reusable: Up to 572°F (300°C)	Samox®	0.19 (4.8)	60 (196)	0.125 (3.0)	IP5X		2 to 6 (0.6 to 1.8)	120 VAC: Separable 2-prong plug 240 VAC: Crimped ferrule leads
HTCE	High temperature, grounded CE approved	Single Install: Up to 1400°F (760°C) Removable/Reusable: Up to 842°F (450°C)	Samox®	0.26 (6.6)	18 (60) 37 (120)	0.26 (6.6)	IP50	✓	5 (1.5)	Crimped ferrule leads



**Ordering Information:**

**HTC Series: 21 W/ft (68 W/m)**

Cord Length ft (m)	Total Watts	Lead Length ft (m)	Part No. 120 VAC	Part No. 240 VAC
0.5 (0.15)	17	2 (0.6)	HTC451007	N/A
1 (0.3)	22	2 (0.6)	HTC451006	N/A
2 (0.6)	43	2 (0.6)	HTC451005	N/A
3 (0.9)	64	2 (0.6)	HTC451001	N/A
4 (1.2)	82	2 (0.6)	HTC451008	N/A
6 (1.8)	125/135	2 (0.6)	HTC451002	HTC452002
8 (2.4)	170	2 (0.6)	HTC451009	N/A
12 (3.7)	260	2 (0.6)	HTC451003	HTC452003

**HWC Series: 60 W/ft (196 W/m)**

Cord Length ft (m)	Total Watts	Lead Length ft (m)	Part No. 120 VAC	Part No. 240 VAC
4 (1.2)	266	2 (0.6)	HWC1040	N/A
6 (1.8)	350	2 (0.6)	HWC1060	N/A
12 (3.7)	750/720	6 (1.8)	HWC1120	HWC2120
18 (5.5)	1000	6 (1.8)	HWC1180	HWC2180
24	1440	6 (1.8)	HWC1240	HWC2240

**HTCE Series: High temperature, Grounded, CE approved**

**18 W/ft (60 W/m)**

Cord Length ft (m)	Total Watts	Part No. 240 VAC
1.6 (0.5)	30	HTCE205060L
3.3 (1.0)	60	HTCE210060L
4.9 (1.5)	90	HTCE215060L
6.6 (2.0)	120	HTCE220060L
8.2 (2.5)	150	HTCE225060L
9.8 (3.0)	180	HTCE230060L
11.5 (3.5)	210	HTCE235060L

**37 W/ft (120 W/m)**

Cord Length ft (m)	Total Watts	Part No. 240 VAC
1.6 (0.5)	60	HTCE205120L
3.3 (1.0)	120	HTCE210120L
6.6 (2.0)	240	HTCE220120L
8.2 (2.5)	300	HTCE225120L
9.8 (3.0)	360	HTCE230120L
11.5 (3.5)	420	HTCE235120L

**NEW!**



**IMPORTANT: Temperature controller is required for these products. See options starting at page 8-1.**

**Custom Sizes and Designs Available: Contact your local distributor or BriskHeat® for more information.**

**XtremeFLEX® HEATING TAPES/CORDS**

**Temperature Controllers and Accessories for Heating Tapes**

**Temperature Controllers:**

**SDX Digital PID Benchtop Temperature Controller**



- Advanced PID control
- Plug & play
- More information on [page 8-11](#)

**SDC/SDCE Digital On/Off Benchtop Temperature Controller**



- On/off control
- Plug & play
- More information starting on [page 8-12](#)

**LYNX® Temperature Control Sets**



- Compact PID controller
- Can be used individually or linked together as a system
- Plug & play
- More information on [page 8-9](#)

**TPO Time Percentage Dial Controller**



- Adjusts the proportion of time a heater is on or off
- Plug & play
- More information on [page 8-39](#)

Full selection of temperature controllers starting at [page 8-1](#).

**Adhesive Tape:**

Provides intimate contact with surface to be heated. A heating tape essential!

Part No.	Material	Width in (mm)	Length Yards (m)	Temperature Limit
PSAT36A	Fiberglass	0.5 (13)	36 (32.9)	350°F (176°C)
AAT260	Aluminum	2.0 (51)	60 (54.8)	350°F (176°C)
AAT2180	Aluminum	2.0 (51)	60 (54.8)	550°F (288°C)



**Power Plugs:**

Choose a power plug for your heater that mates with your temperature control device. Complete selection found on [page 8-40](#)

Part No.	Description	Voltage (VAC)	Amps	
10113	NEMA 5-15P 2 pin, 3 wire (grounded)	125	15	
10478	NEMA 6-15P 2 pin, 3 wire (grounded)	250	15	
20978-03	3 position Harting HAN Q2/0	600	15	
11670-04	IEC 14 2 pin, 3 wire	125/250	10 @ 250 VAC	
41289-05	Schuko CEE 7/7 2 pin, 3 wire	250	15	
41289-02	UK Type G 2 pin, 3 wire	250	15	